



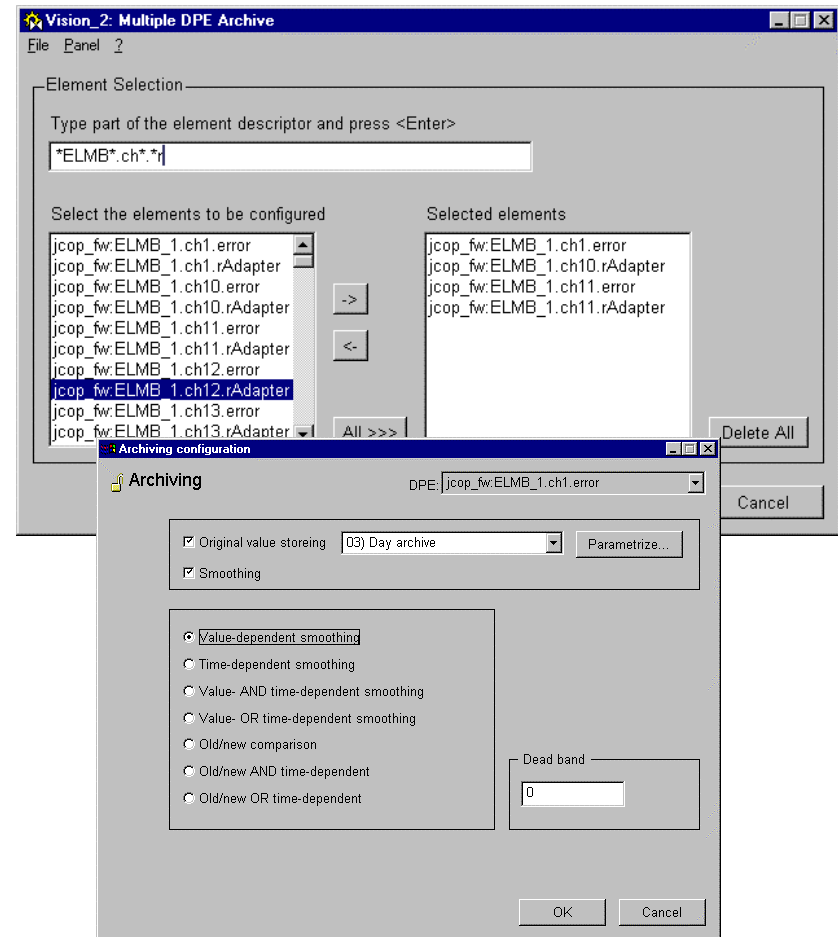
PVSS Issues - Archiving

- **Archiving**
 - What is it?
 - Archiving many data points
 - Backup
- **Retrieval**
 - What is required?
- **Analysis**
 - What tool?



Archiving many data-points

- **Rough selection made with 'mask'**
- **Individual selection available from these**
- **'Normal' configuration from this point**
- **Library function copies configuration to all selected data-point elements**





Back-up

- **Problems arise when disk fills up with data (not surprising)**
- **Back-up can be configured to remove older files to another medium**
 - Only DAT tape to another host (no network back-up available)



ATLAS
DCS

Retrieval

- Panel created to retrieve data from archive
- List of data-points given
- Time range entered
- Data is output to a Comma Separated Variable (CSV) file
 - Suitable for Excel

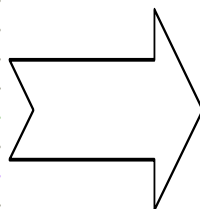


ATLAS
DCS

Formatting

Unformatted Data

	A	B	C
1	System1:ELMB_1.ch1.counts		
2	2001.07.04 10:59:04.827	1463	
3	2001.07.04 11:05:31.455	1464	
4	2001.07.04 11:30:31.509	1464	
5	2001.07.04 11:40:31.536	1460	
926			
927	System1:ELMB_1.ch2.counts		
928	2001.07.05 11:59:41.661	10275	
929	2001.07.05 12:00:24.634	10261	
930	2001.07.05 12:10:24.650	10261	
931	2001.07.05 12:25:24.711	10259	
5044			
5045	System1:channel3.value		
5046	2001.07.05 11:56:40.139	8.71277	
5047	2001.07.05 12:05:24.720	8.71124	
5048	2001.07.05 12:25:24.798	8.70972	
5049	2001.07.05 12:35:24.810	8.70972	
5050	2001.07.05 12:45:24.875	8.71124	
5051	2001.07.05 13:05:24.960	8.70972	
5052	2001.07.05 13:15:24.980	8.70972	
5053	2001.07.05 13:35:25.022	8.71124	
5054	2001.07.05 13:45:25.049	8.71277	
5055	2001.07.05 13:55:25.052	8.71277	
5056	2001.07.05 14:10:25.096	8.71277	
5057	2001.07.05 14:20:25.122	8.70972	



Formatted Data

	A	B	C	D	E
1		ELMB_1.ch1.counts	ELMB_1.ch2.counts	ELMB_1.ch3.counts	ELMB_1.ch4.cou
152	05.07.2001 11:59:04	14024	10275	5710	54
153	05.07.2001 12:09:04	14024	10261	5710	54
154	05.07.2001 12:19:04	14024	10259	5708	54
155	05.07.2001 12:29:04	14023	10260	5708	54
156	05.07.2001 12:39:04	14023	10260	5709	54
157	05.07.2001 12:49:04	14023	10262	5709	54
158	05.07.2001 12:59:04	14022	10260	5708	54
159	05.07.2001 13:09:04	14019	10260	5708	54
160	05.07.2001 13:19:04	14023	10260	5708	54
161	05.07.2001 13:29:04	14023	10261	5709	54
162	05.07.2001 13:39:04	14025	10261	5710	54
163	05.07.2001 13:49:04	14023	10261	5710	54
164	05.07.2001 13:59:04	14023	10261	5710	54
165	05.07.2001 14:09:04	14023	10260	5710	54
166	05.07.2001 14:19:04	14023	10260	5708	54
167	05.07.2001 14:29:04	14022	10259	5709	54



Off-line Analysis

- **What will be used for the analysis of the data?**
- **How would it be imported?**
- **What is required?**
- **Will it be an API manager to the 'live' data?**
- **Will it be exported from PVSS and then stored separately?**