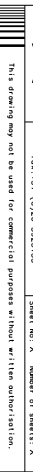


13	SWITCH		F30/80
12	MOTOR		U33
11	TANDWIEL KAST	NEUGART	FS70-140-0P1
10	KOPF M8x0,5		TW0028
09	HARD STOP M8x0,5		φ8-x36
08	KOPF SH M16x2	SKF	TVT0902
07	SPINDLE SH M16x2 R	SKF	TVT0904
06	FLEX KOPPELUNG	RVS	φ26x70
05	BALG KOPPELUNG	XX	TVT0911
04	MOTOR BASIS		φ112x62
03	TAFEL		126x50x110
02	STERN		110x104x15
01	BASISPLAT	ALUMINIUM	100x30x840

Project: LHCb VERTEX DETECTOR

Title: TEST SETUP

Scale: 1:1
 Date: 19-02-2002
 Drawing No.: 19-02-2002
 Project: LHCb VERTEX DETECTOR
 Title: TEST SETUP
 Sheet No.: X



NIKEEF
 NIKHEF
 Nuclear Physics
 Institute
 De Boelelaan 1081
 NL-1081 HE Amsterdam
 Tel: +31-20-525-92515

Sheet No.: X

This drawing may not be used for commercial purposes without written permission.