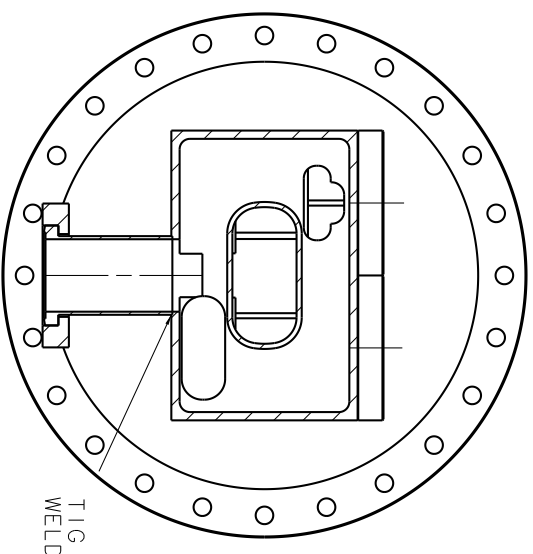
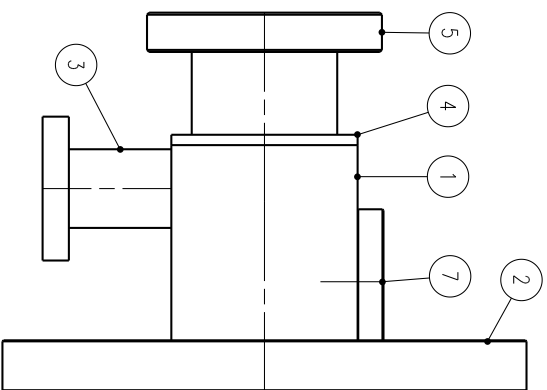
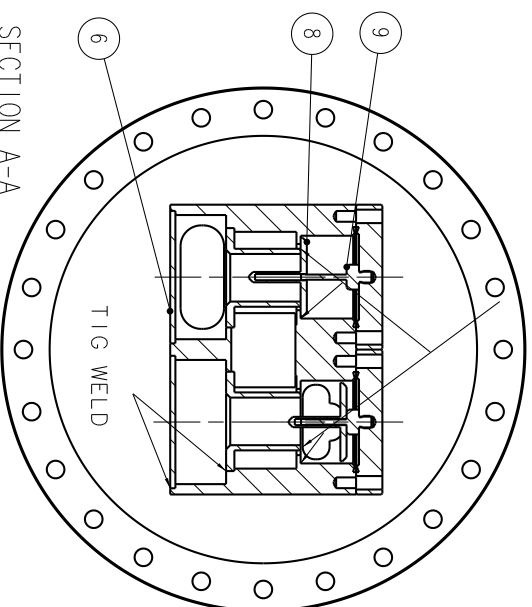
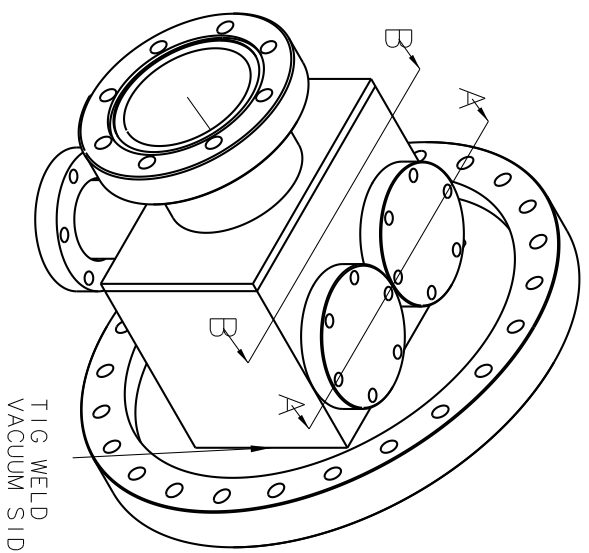
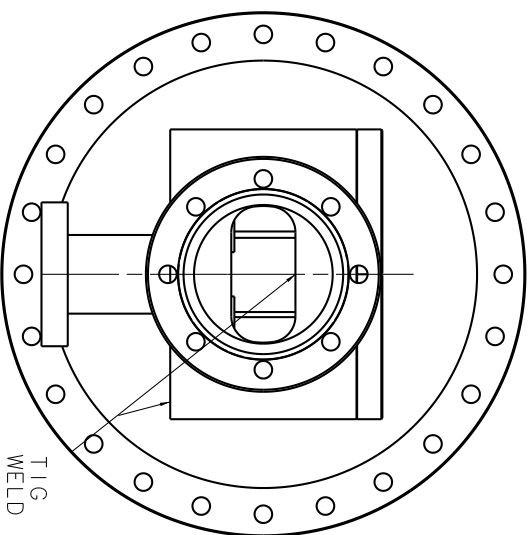


KLEP ZITTING  
NABEWERKEN NA LASSEN  
(ZO GLAD EN VLAK MOGELIJK)



SECTION B-B

09	02	VALVE-HOLDER	316 L	Ø12x35	LVI-1709
08	02	VALVE	ALUMINIUM	Ø40x30	LVI-1708
07	02	CF 40	316 L	XX	LVI-1707
06	02	WELDING PLATE	316 L	Ø65x2.5	LVI-1706
05	01	CF 63 ROT	316 L	XX	LVI-1702
04	01	PLATE	316 L	140x90x10	LVI-1702
03	01	ØR 40 ROT	316 L	XX	LVI-1703
02	01	CF 200 ROT	316 L	XX	LVI-1704
01	01	VALVE-HOUSE	316 L	140x107x90	LVI-1701

Project: LHCB-VC	
Title: GRAVITY VALVE	
Scale: 1:4	Drawn: M. DOETS
Date: 15-03-2001	Checked:
General tolerances (geometrical tolerances) unless stated otherwise according to ISO-2768-mK-E Surface finish (roughness) unless stated otherwise according to ISO-8015-E DIN 3142	

NATIONAL INSTITUTE FOR NUCLEAR PHYSICS, AND HIGH ENERGY PHYSICS P.O. 41882, 1009 DB Amsterdam, The Netherlands Visitors: Kruisstraat 409, 1098 SJ, Amsterdam tel.: +31-(0)20-5922000 fax: +31-(0)20-5925155	
Size	Identification No.:
A3	LVI17
Sheet No: X	Number of sheets: X

This drawing may not be used for commercial purposes without written authorisation.

