

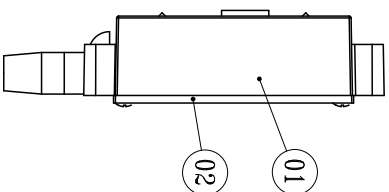
Technical drawing of a mechanical part, showing front and side views with dimensions.

**Front View (Top):**

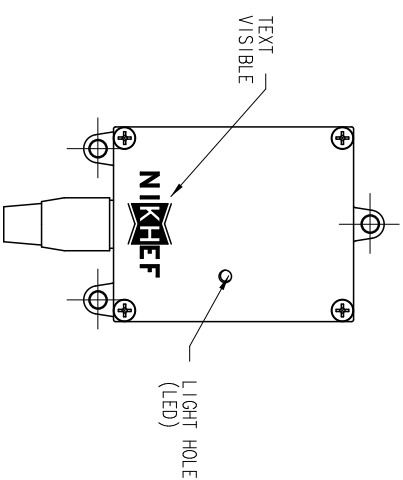
- Overall width: 72.0 REF
- Overall height: 51.5 REF
- Distance from top edge to centerline: 33.0 REF
- Distance from centerline to bottom edge: 12.5 REF
- Distance from left edge to centerline: 63.5 REF
- Distance from centerline to right edge: 12 REF
- Feature A: A circular feature (hole) located on the left side, centered vertically.
- Feature B: A rectangular feature (slot) located on the right side, centered vertically.

**Side View (Bottom):**

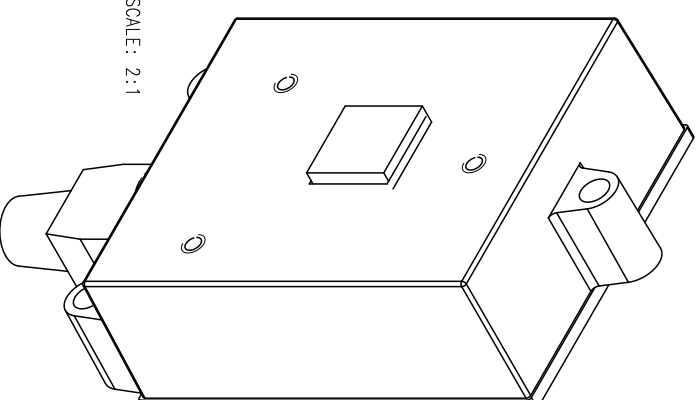
- Overall width: 40.0 REF
- Feature A: A circular feature (hole) located on the left side, centered vertically.
- Feature B: A rectangular feature (slot) located on the right side, centered vertically.



ATTENTION !  
TEXT AS DRAWN  
FOR ILLUSTRATION ONLY !

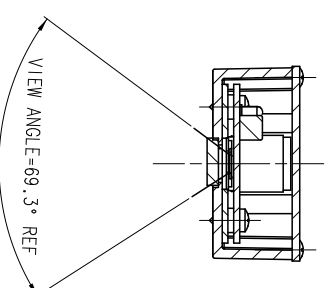
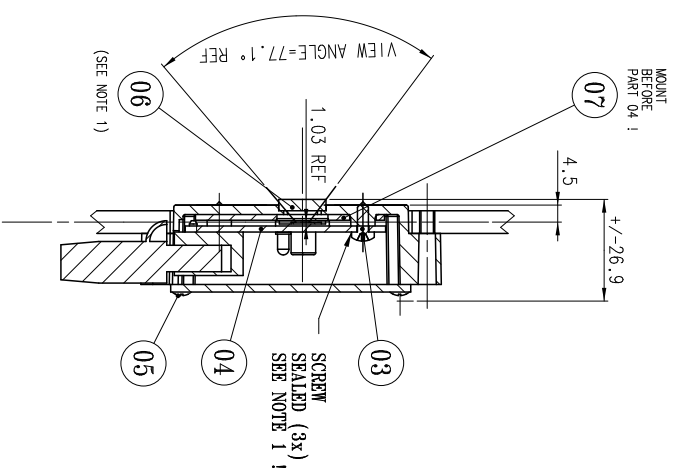
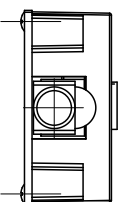


SCALE: 2:1



**NOTES:**

1. FOR ASSEMBLY PROCEDURE SEE  
QUALITY ASSURANCE/-CONTROL DOCUMENT  
No. ....



## SECTION A-A

## SECTION B-B

|          |         |                          |          |      |                 |                |
|----------|---------|--------------------------|----------|------|-----------------|----------------|
| 10       |         |                          |          |      |                 |                |
| 09       |         |                          |          |      |                 |                |
| 08       |         |                          |          |      |                 |                |
| 07       | 01      | SEALING 2                |          |      | A4              | RA-A-32-006    |
| 06       | 01      | INFRA-RED FILTER         |          |      | A4              | RA-A-32-003    |
| 05       | 04      | CROSS H/D RECESSED SCREW | A2-70    |      | M3X8-DIN 965    |                |
| 04       | 01      | ASS'Y P.C.B. SENSOR      |          |      | NIKKEF-EL. DEP. | 38110.04.01.V2 |
| 03       | 03      | CROSS PAN HEAD SCREW     | A2-70    |      | M3X6-DIN 7985   |                |
| 02       | 01      | COVER                    |          |      | NIKKEF-EL. DEP. | 38110.04.02    |
| 01       | 01      | HOUSING                  |          |      | A2              | RA-A-32-001    |
| PART NO. | NIM-BER | TITLE                    | MATERIAL | SIZE | NOTE            | I.D. NO./NORM  |
| Project: |         |                          |          |      |                 |                |
| 5        | 6       | Date                     |          | Name |                 |                |

# ASSEMBLY IMAGE SENSOR

Scale: 1:1

|                 |          |
|-----------------|----------|
| Date: 20-04-'99 | Checked: |
|-----------------|----------|

Dim in

|   |   |   |   |
|---|---|---|---|
| 5 | 3 | 2 | 1 |
|---|---|---|---|

Dim. in m

**NATIONAL INSTITUTE FOR NUCLEAR PHYSICS  
AND HIGH ENERGY PHYSICS**

Size  
RAA32

五

P.O. 41882, 1009 DB Amsterdam, The Netherlands  
Visitors: Kruislaan 409, 1098 SJ, Amsterdam

A2 CERN Id. No.: ATIMACG 0011



tel: +31-(0)20-5922000  
fax: +31-(0)20-5925155

|               |                     |
|---------------|---------------------|
| Sheet No: 1   | Number of sheets: 1 |
| A1LMMACG_0011 |                     |

This drawing may not be used for commercial purposes without written authorisation.