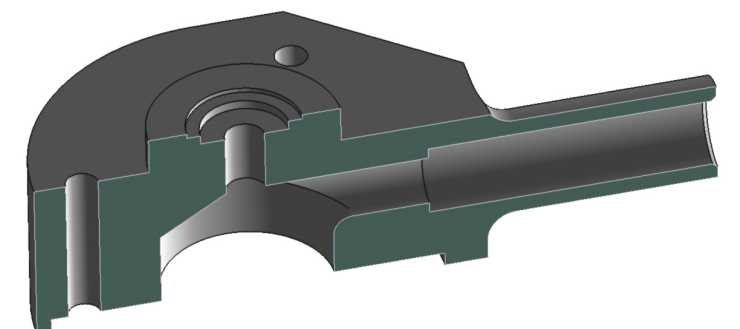
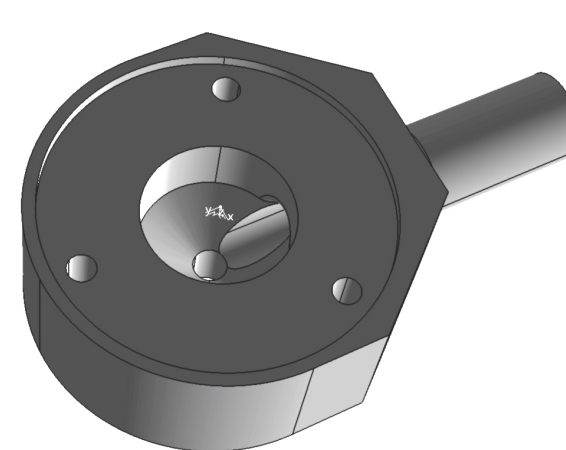
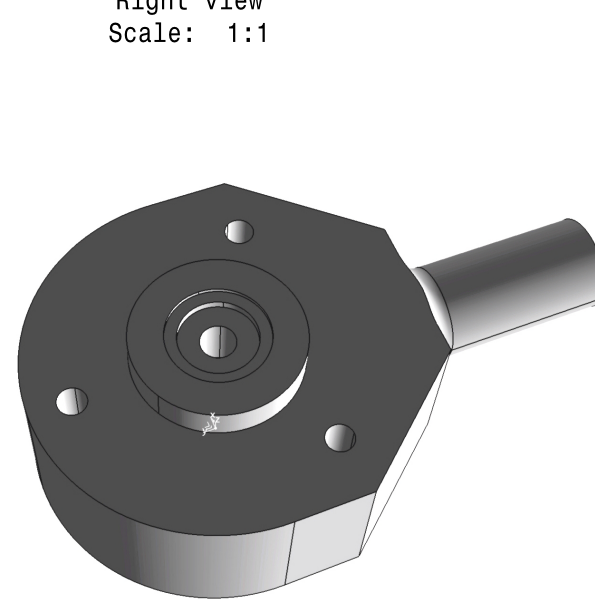
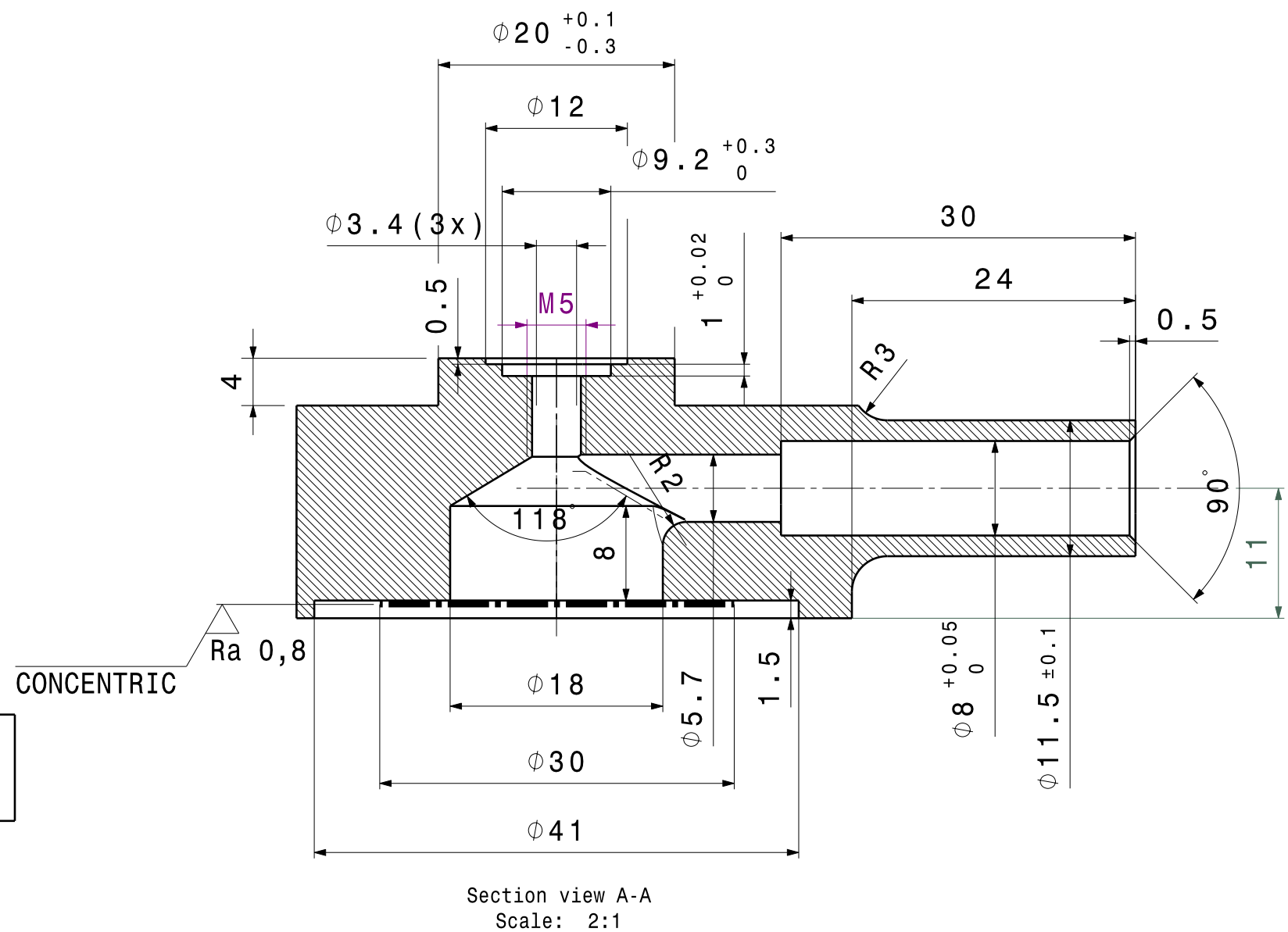
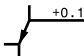
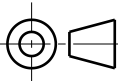

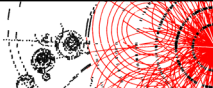


Mass: Approx. 26 gram



Ra3,2 (Ra0,8)

General tolerances unless otherwise stated according to :ISO-2768-mK-E Geometrical tolerances unless otherwise stated according to:ISO-8015-E Roughness unless otherwise stated according to :ISO-1302				Material: SIMONA PE 100 (HDPE -Black)	
Project: Astroparticle Physics KM3Net		Units: mm	Date: 19/12/2013	Revision: A	
Top folder:1 km Test Deployment		Size: A3	Engineer: A. Korpelaar		
Name: End Cover Type 7			Checked: A. Korpelaar		
			Item number: AA7664	Status: Released	
		National Institute for Subatomic Physics Science Park 105, 1098XG Amsterdam			
This drawing may not be used for commercial purposes without written authorisation.					