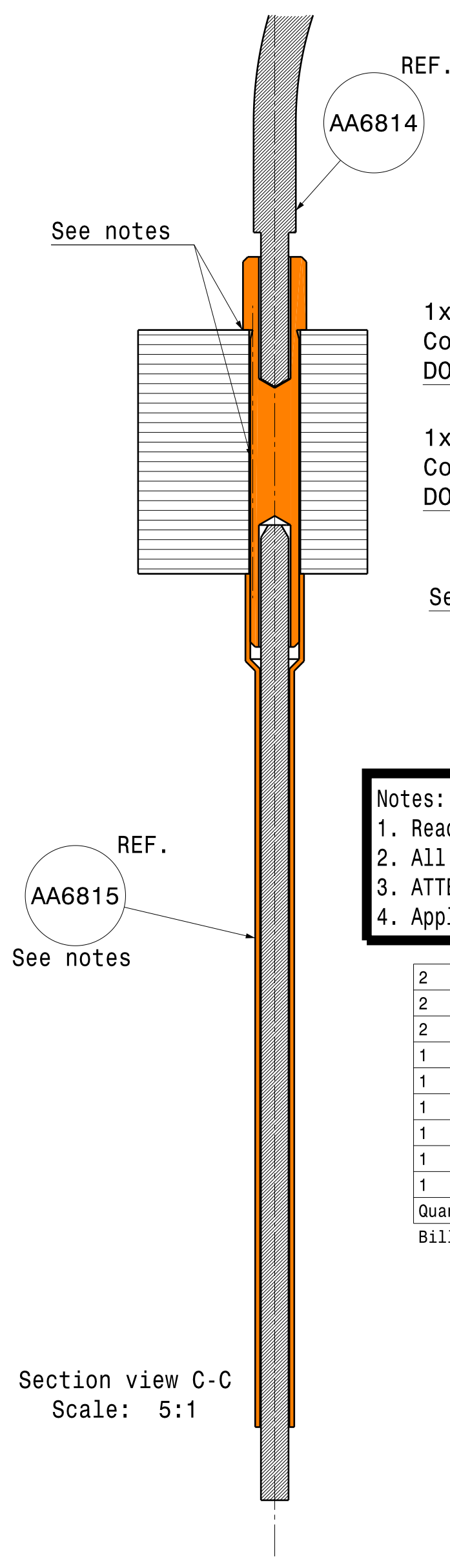
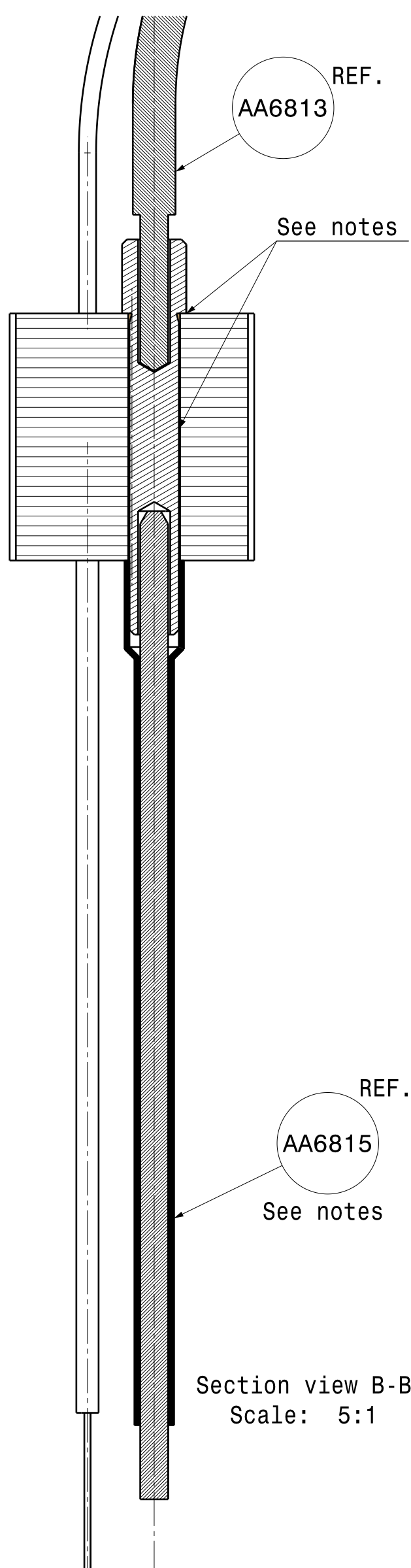
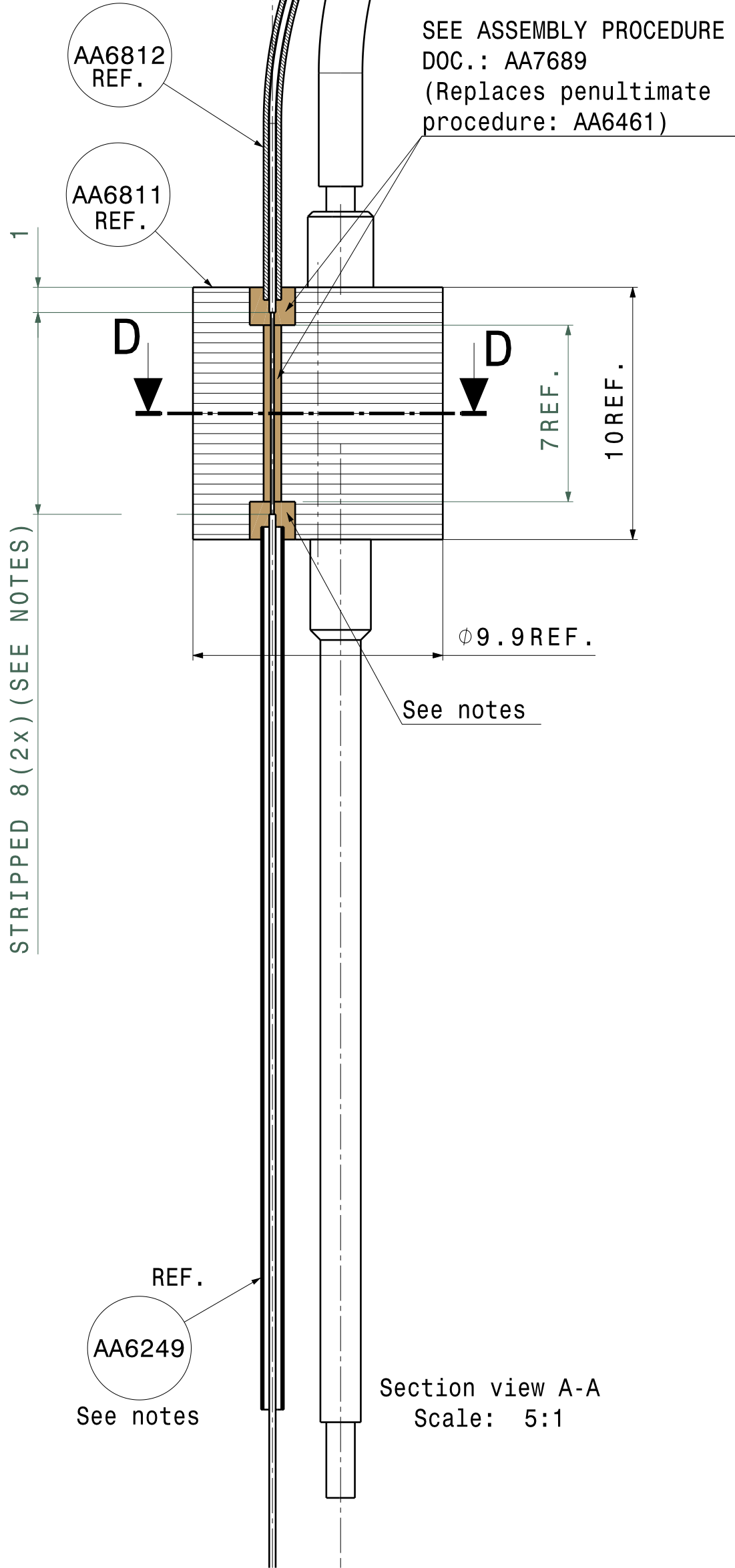


L4	800	2x Power Cable
L3	500	2x Power Cable
L2	1500	2x Fibre
L1	1500	2x Fibre
Length	mm	Note



1x Fiber  
Color: WHITE  
DOM OUT

1x Fiber  
Color: BLACK  
DOM IN

See notes

Section view D-D  
Scale: 20:1

- Notes:
1. Read doc.: Assembly Procedure PPM-DU DOM Penetrator (AA7689) carefully !
  2. All SOLDERING STEPS MUST BE DONE BEFORE GLUING AND APART FROM STUD 10 (AA6811)
  3. ATTENTION !! APPLY ALL EPOXY gluings ONLY in HORIZONTAL position !!
  4. Apply sleeves AFTER curing and keep isolation AWAY from EPOXY GLUING area !!

2	AA6843	Power Cable Type 10A_DOM Side (Stripped Insulation)	A
2	AA6830	Cable Soldering Pin Type A	D
2	AA6815	Shrink Sleeve 10 (Power-DOM Side)	A
1	AA6814	Power Cable Type 10B (Orange)	A
1	AA6813	Power Cable Type 10A (Black)	A
1	AA6250	Fiber C1 (Bend Bright) 250-127mu (single)	B
1	AA6249	Shrink Sleeve 1A (DOM side)	B
1	AA6812	Shrink Sleeve 10 ( 2 Fibers-BE0C side)	A
1	AA6811	Stud 10	A
Quantity	Part Number	Definition	Revision

Bill of Material: AA6810

ATTENTION ! REVISION AS INDICATED  
IS PRODUCT OR PART REVISION

General tolerances unless otherwise stated according to : ISO-2768-mK-E Geometrical tolerances unless otherwise stated according to : ISO-9015-E Roughness unless otherwise stated according to : ISO-1302		Units: mm	Date: 21/01/2014	Revision: D
Project: Astroparticle Physics KM3NeT		Size: A2	Engineer: A. Korporaal	
Top folder: Penetrators			Checked: A. Korporaal	
Name: Stud 10 Ass'y			Item number: AA6810	Status: Released
National Institute for Subatomic Physics Science Park 105, 1098XG Amsterdam		Nikhef number: 45361-MT-01466		

This drawing may not be used for commercial purposes without written authorisation.