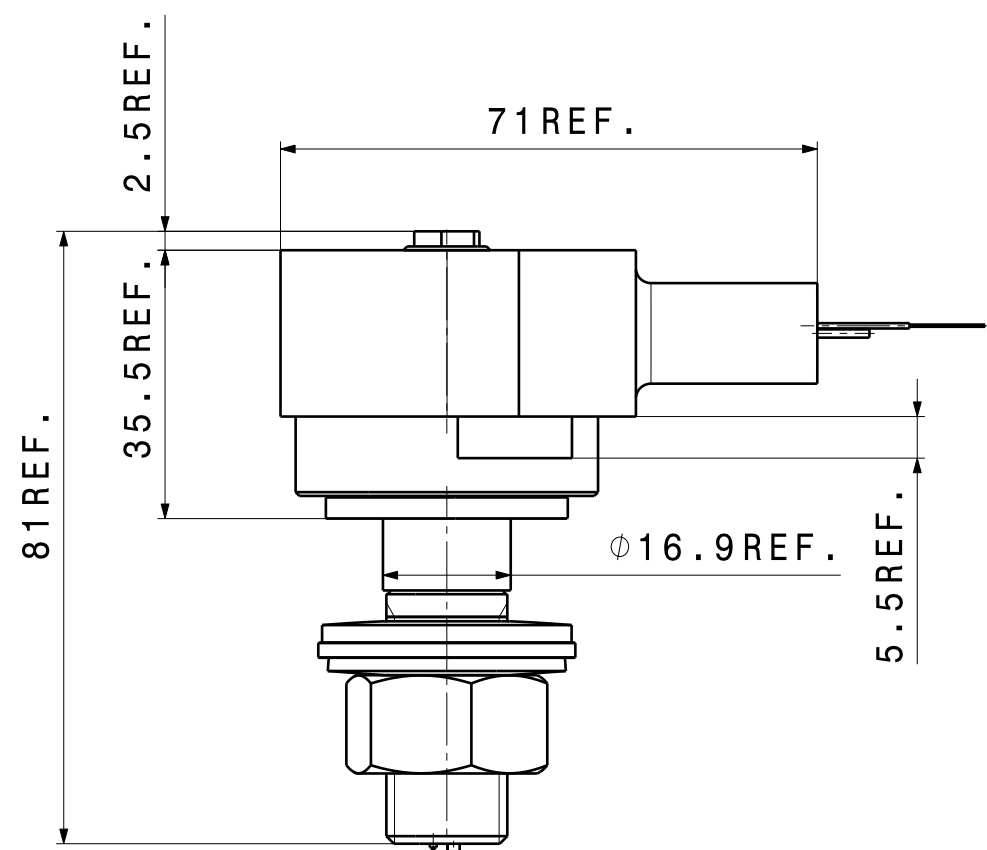
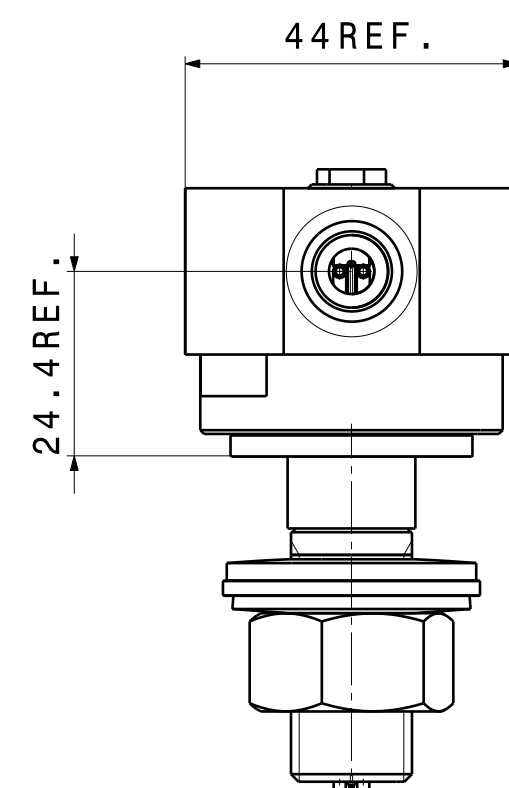


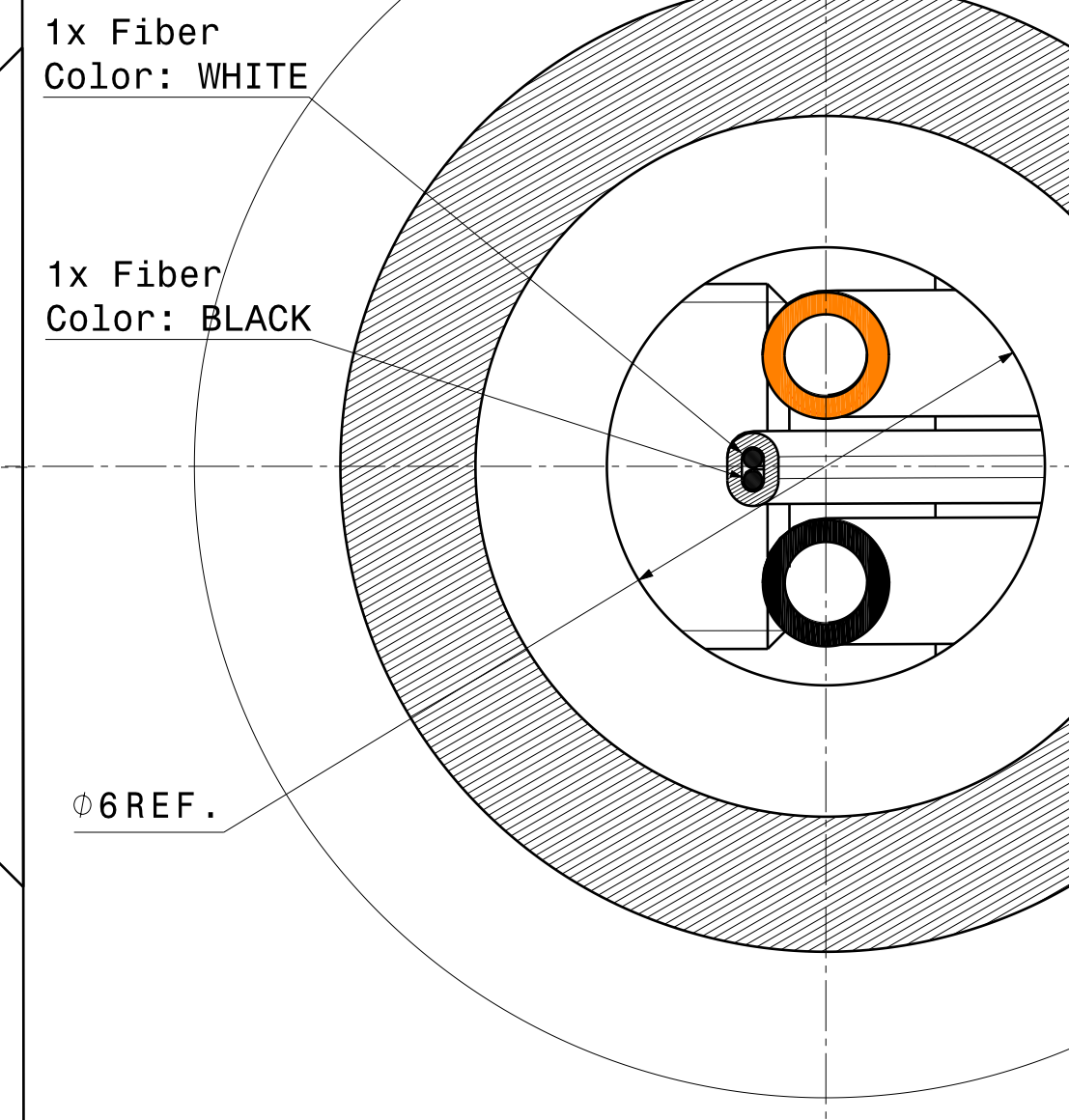
Top view
Scale: 1:1



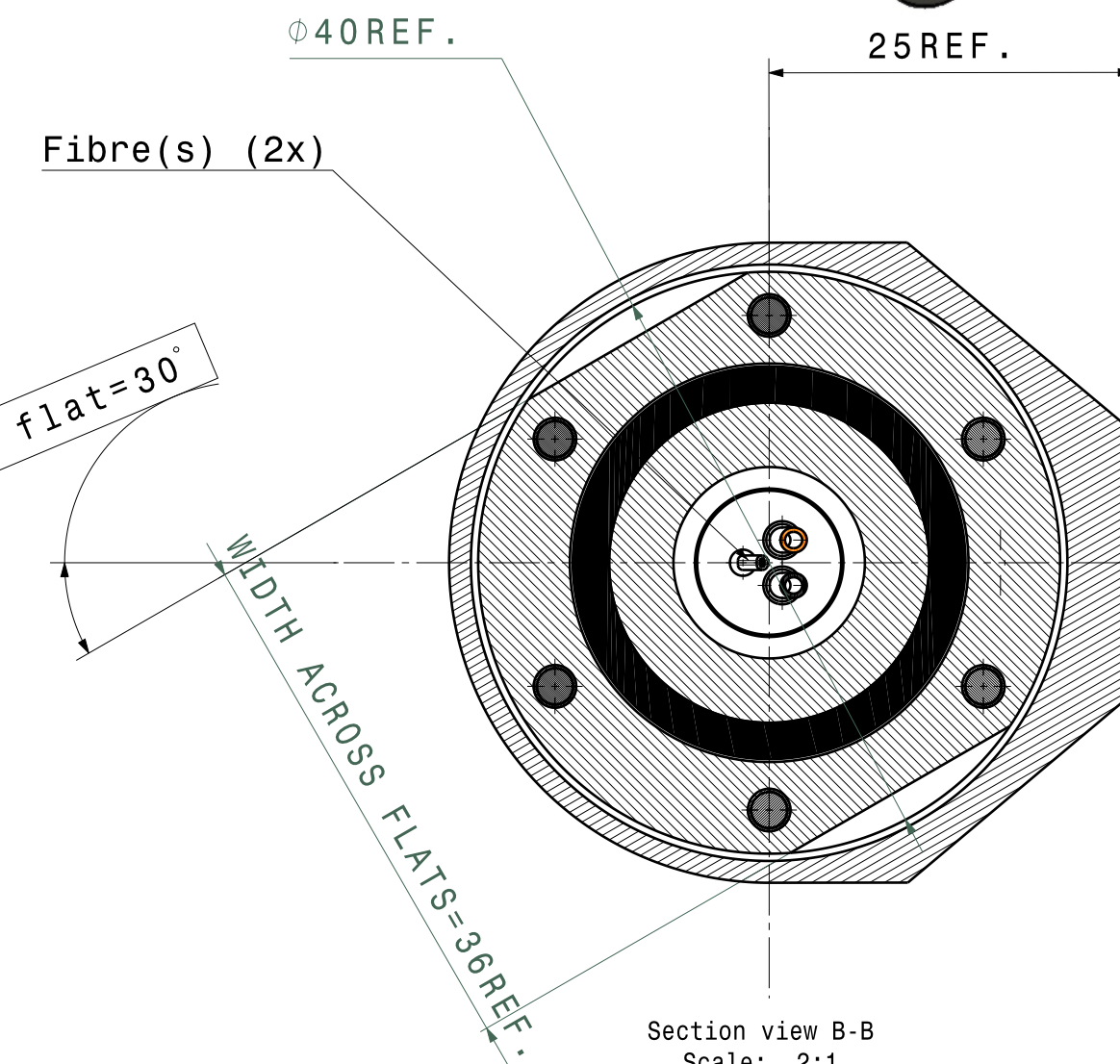
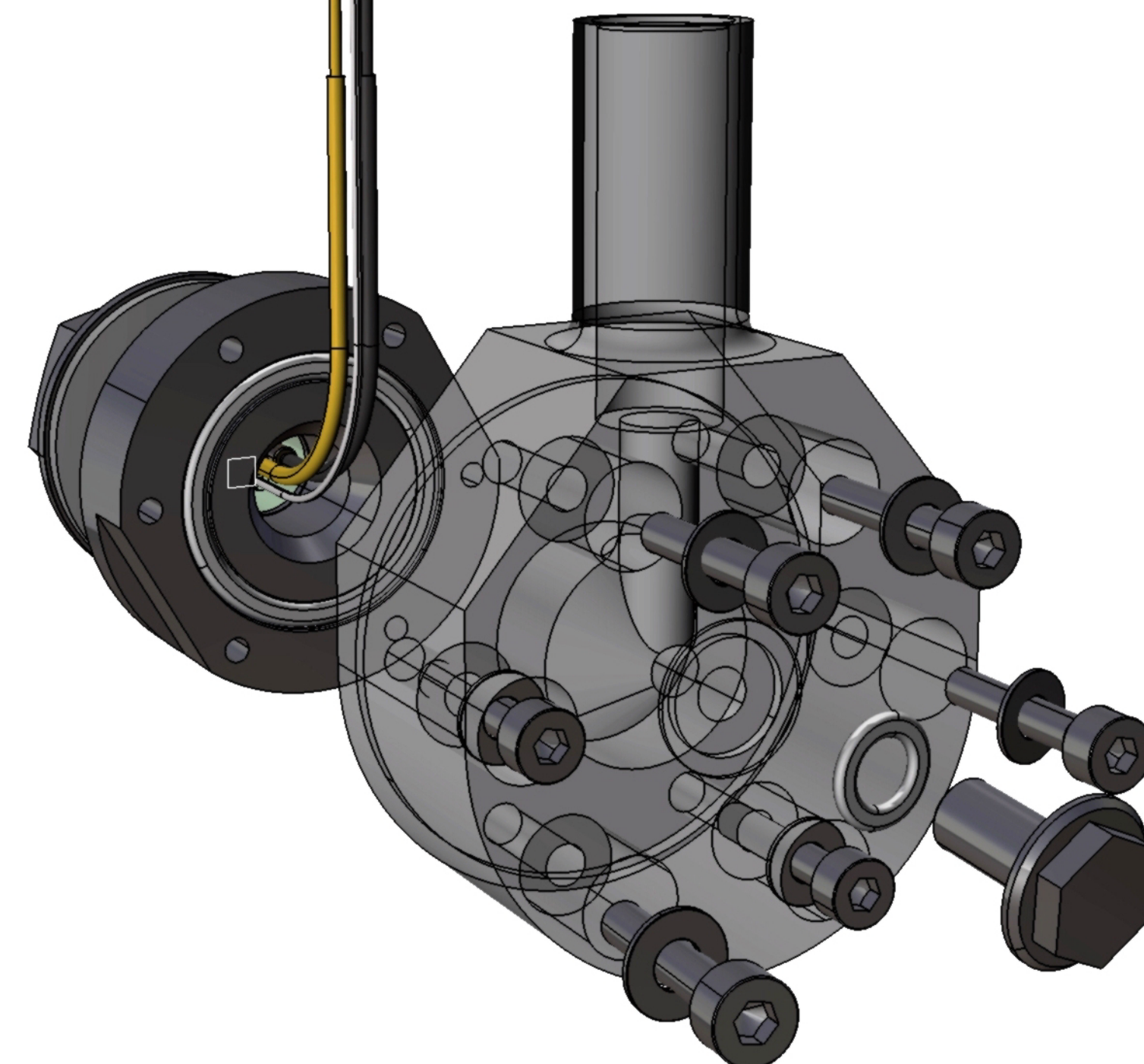
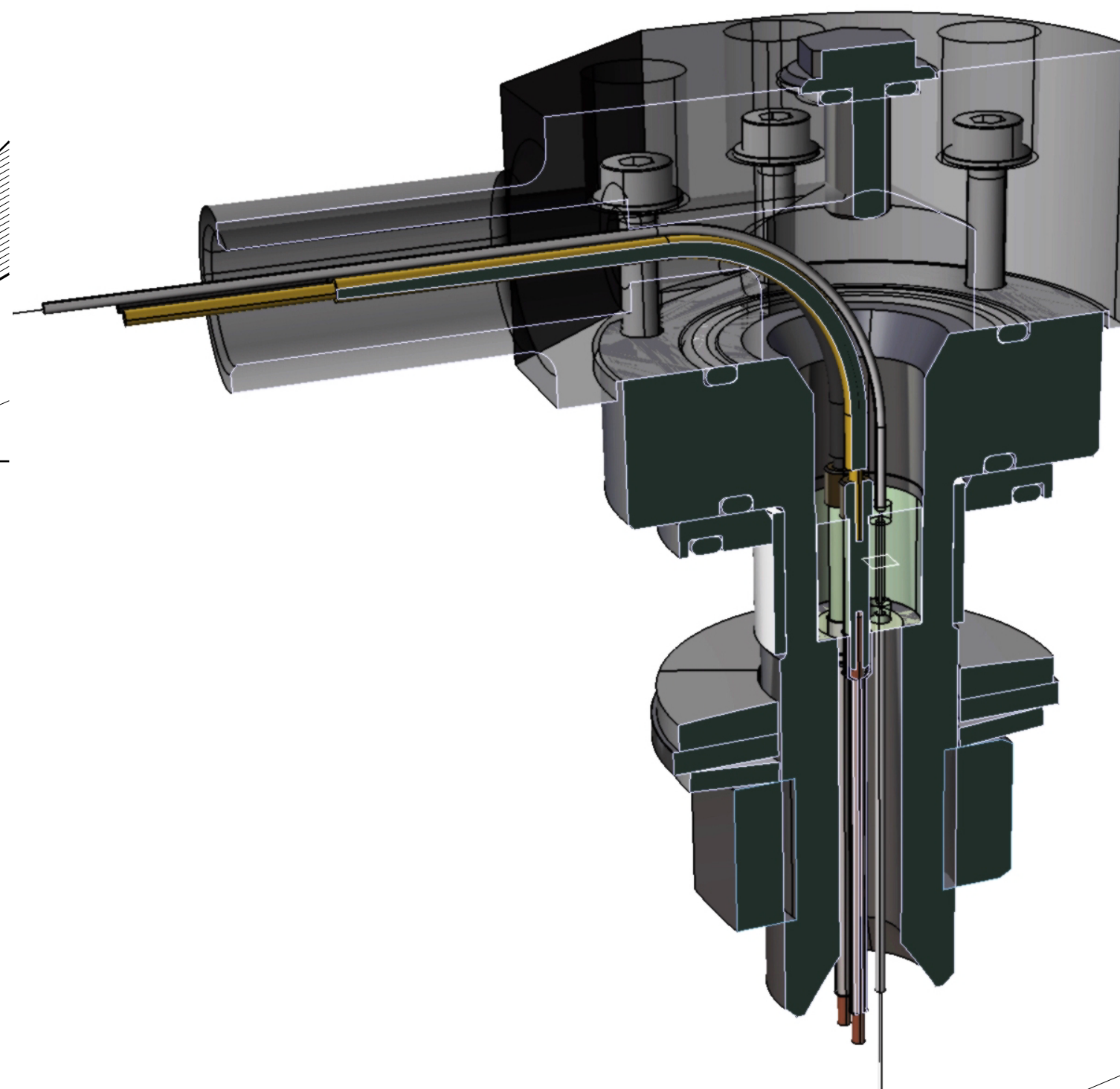
Front view
Scale: 1:1



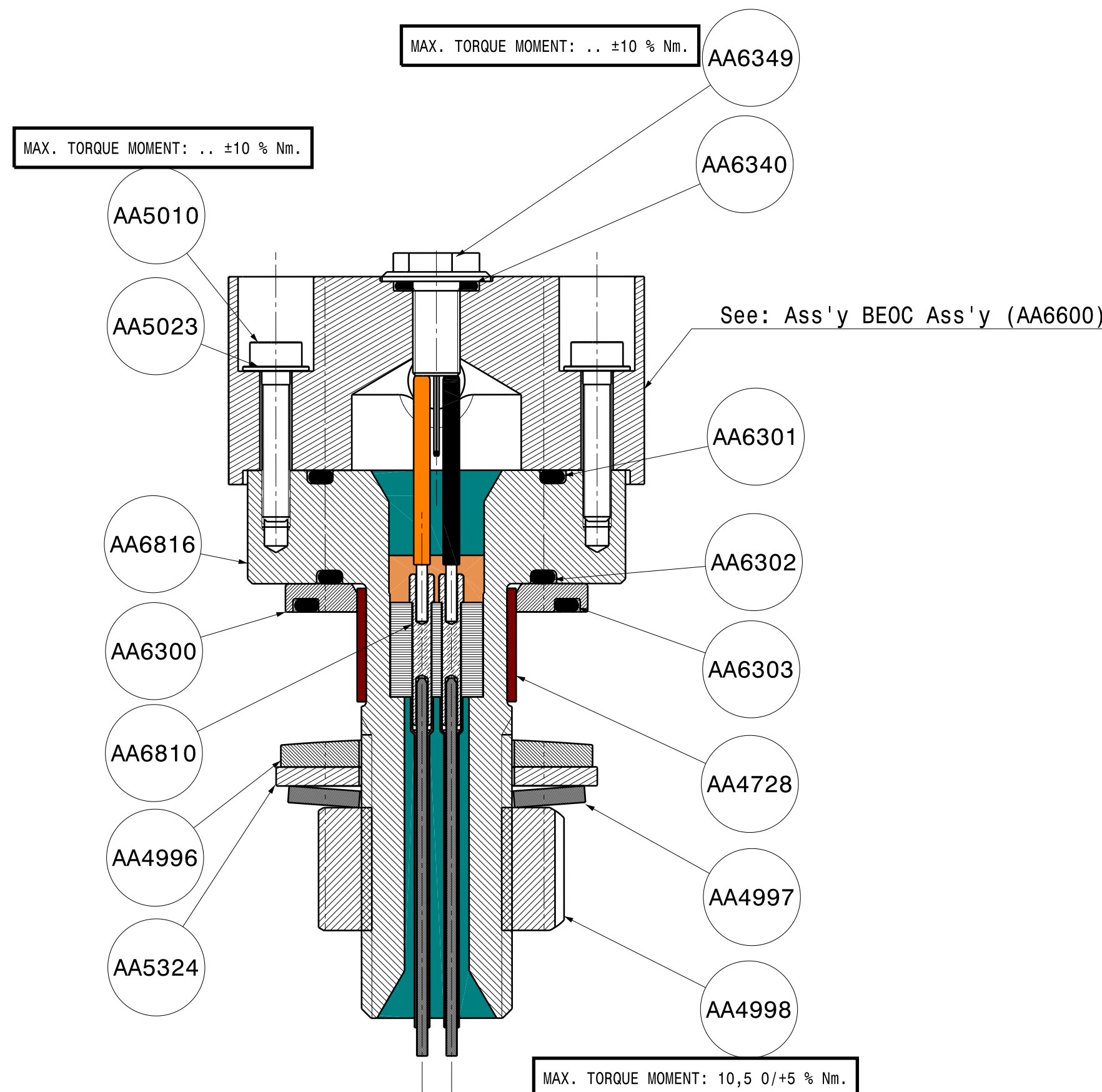
Right view D
Scale: 1:1



Section view E-E
Scale: 10:1



Section view B-B
Scale: 2:1



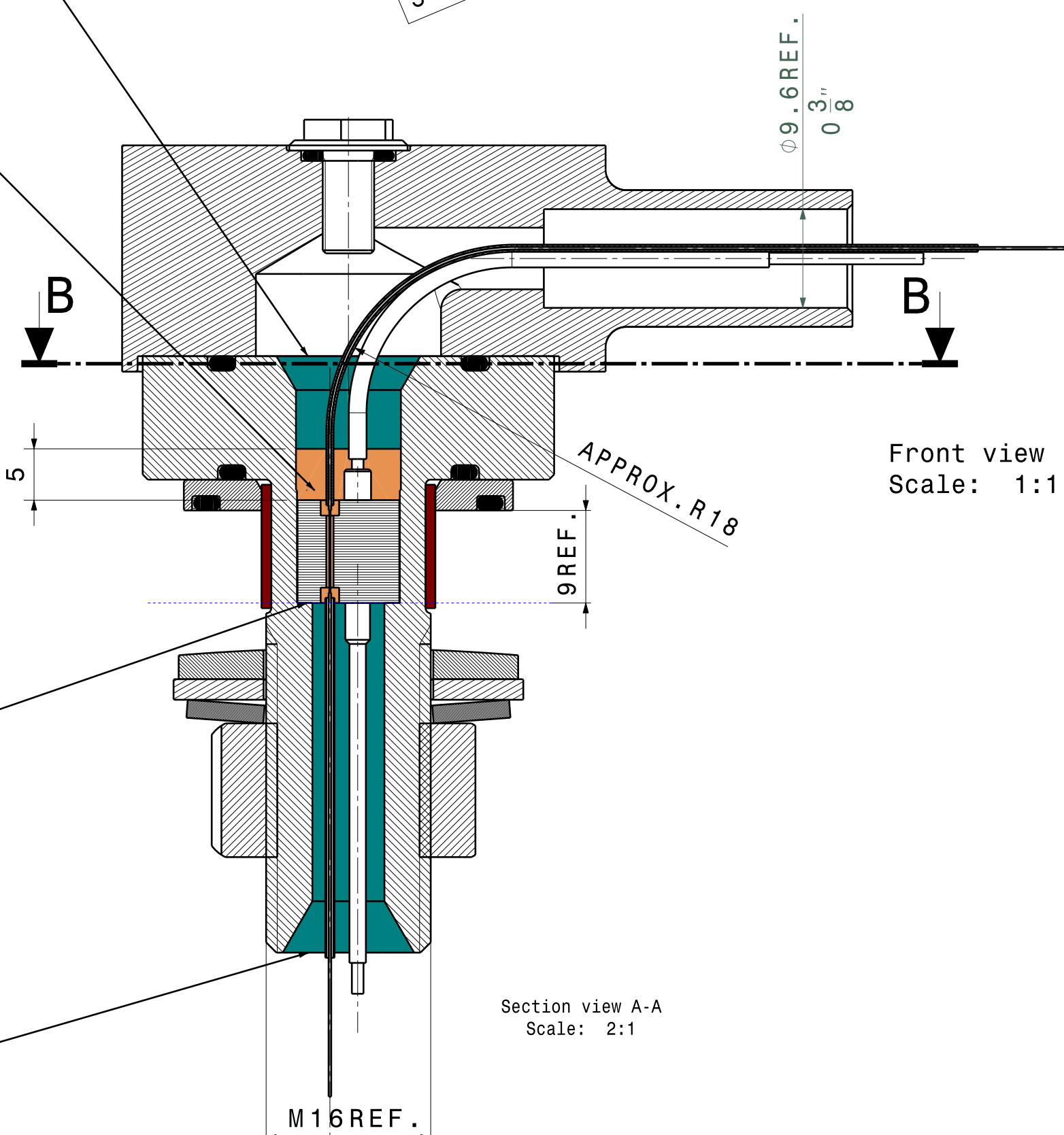
Section view C-C
Scale: 2:1
(Note: Shrink sleeve AA6812 NOT shown)

See Doc.: AA6461 - Assembly procedure PPM-DU DOM Penetrator.

See Doc.: AA6461 - Assembly procedure PPM-DU DOM Penetrator.

See Doc.: AA6461 - Assembly procedure PPM-DU DOM Penetrator.

See Doc.: AA6461 - Assembly procedure PPM-DU DOM Penetrator.



Section view A-A
Scale: 2:1

Stud 10 Ass'y (AA6810) orientation w.r.t. flat=30°

1	AA6551	Sealing screw angled I/O	A
1	AA6340	O-ring 5A (Axial)	D
6	AA5010	Hex. Socket Head Cap Screw M3x16	A
6	AA5023	M3 Washer (Titanium)	A
1	AA5324	Filling Ring BLGEST-16,5	A
1	AA4998	Hexagon Nut M16	B
1	AA4997	Conical Spring Washer M16-DIN 2093	A
1	AA4728	Centering Clip	A
1	AA6303	O-ring 7A (Axial)	D
1	AA6302	O-ring 6A (Axial)	D
1	AA6301	O-ring 1A (Axial)	C
1	AA6300	Adapter Ring 2A	B
1	AA4996	Profiled Washer 2	A
1	AA6810	Stud 10 Ass'y	B
1	AA6816	Penetrator DOM Type 7	A
Quantity Part Number Definition			Revision
Bill of Material: AA6820			

ATTENTION !
REVISION AS INDICATED
IS PRODUCT OR PART REVISION

NOTES: APPLY ASSEMBLED PRODUCT (AA6299) TO PRESSURE TEST AT:
Deployment depth +20%.
For Capa Passero site -Italy (PPM-DU) => 360+72 = 432 BAR
See doc. AA5769 - Penetrator DOM-BE0C Pressure Test Setup 1

General tolerances unless otherwise stated according to : ISO-2768-mc-E		Units: mm		Date: 25/11/2013	Revision: B
Project: Astroparticle Physics KM3NeT		Size: A1	Engineer: A. Korporaal		
Top folder: Penetrators		Checked: A. Korporaal	Item number: AA6820	Status: Released	
Name: Penetrator DOM Type 7 Ass'y					
National Institute for Subatomic Physics		Nikhef number: 45361-MT-01461			
Science Park 106, 1098 SG Amsterdam					

This drawing may not be used for commercial purposes without written authorisation.