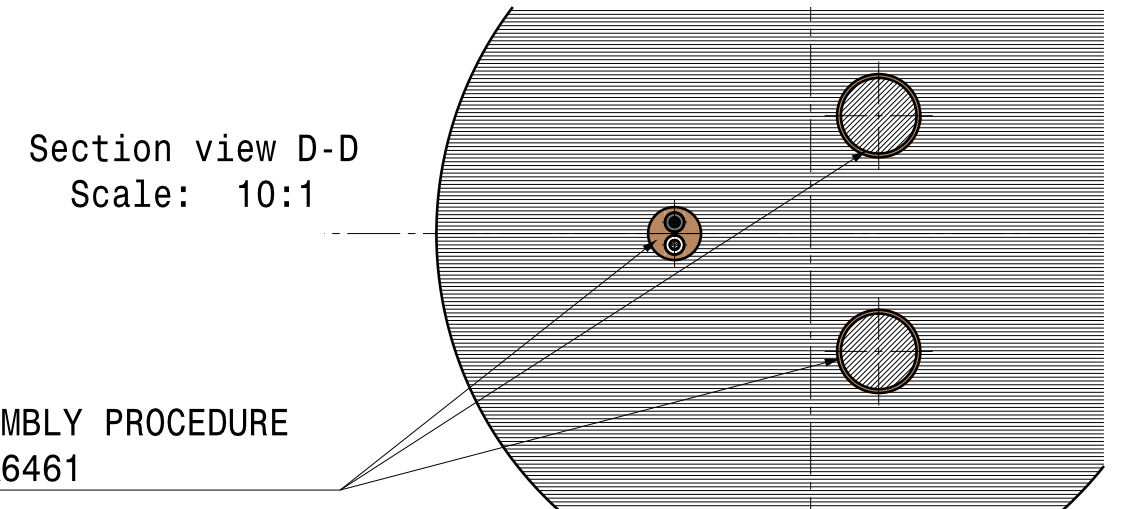
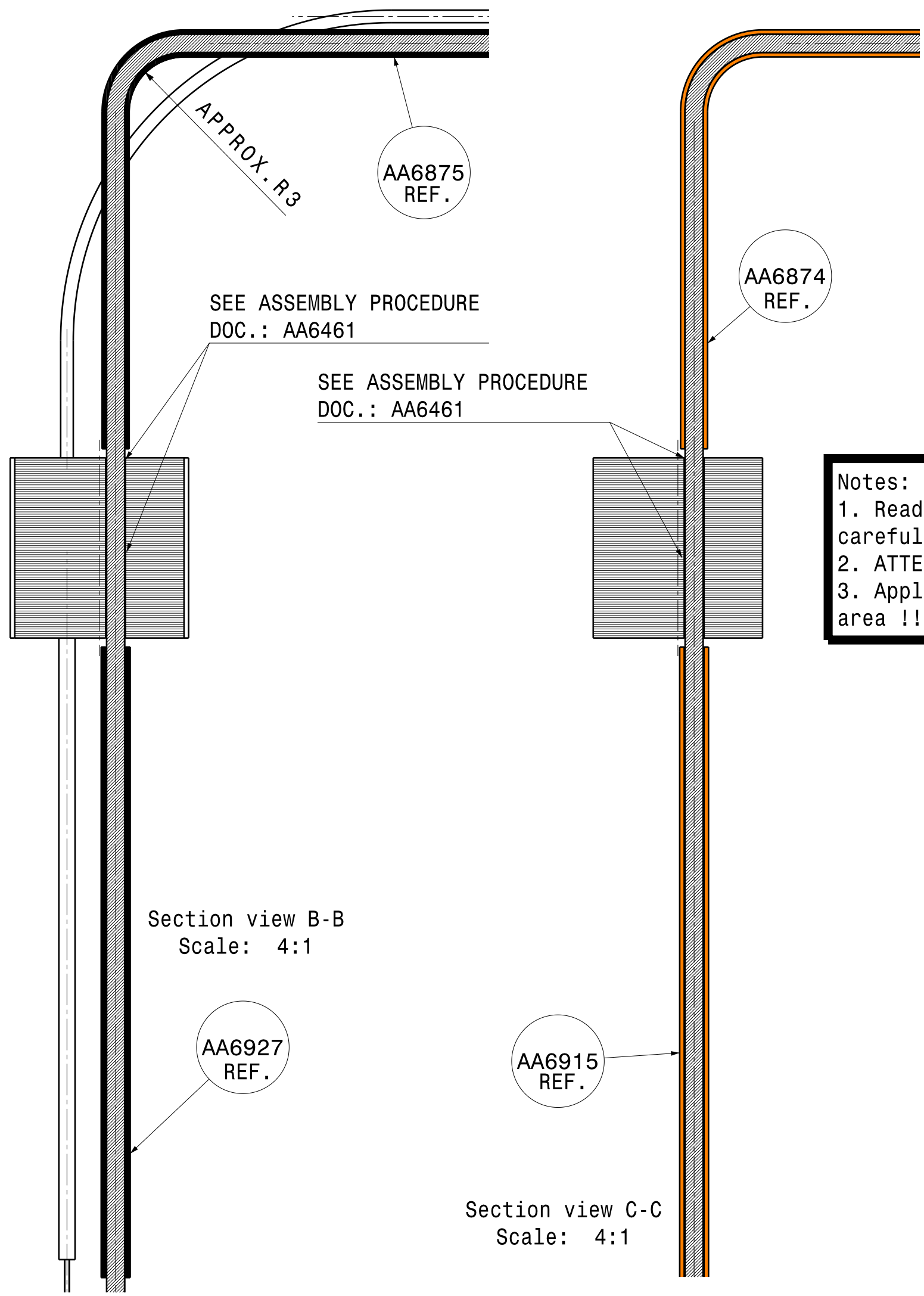
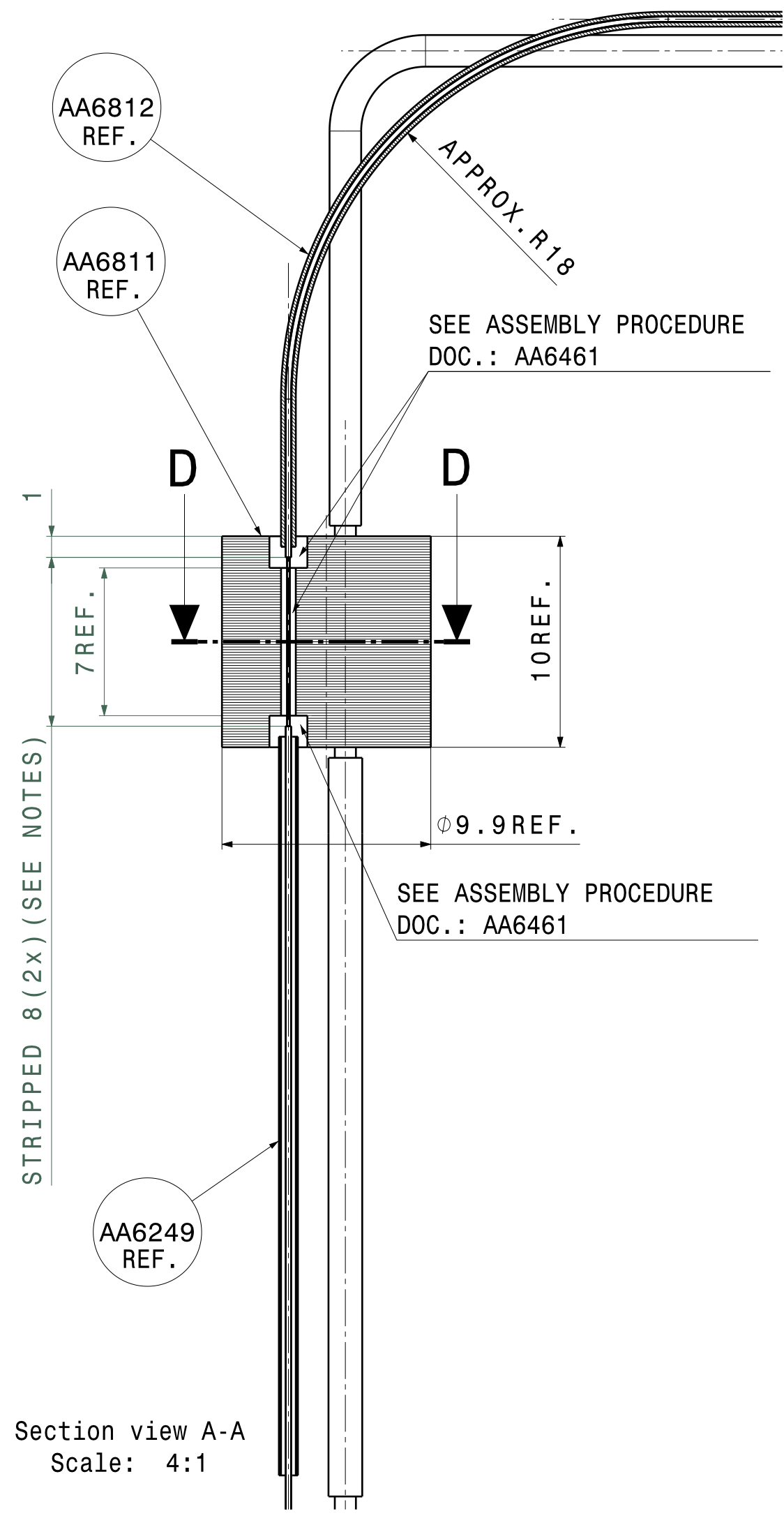


L4	800	2x Power Cable
L3	400	2x Power Cable
L2	1500	2x Fiber
L1	1500	6x Fiber
Length	mm	Note



Notes:
1. Read doc.: Assembly Procedure PPM-DU DOM Penetrator (AA6461) carefully !
2. ATTENTION !! APPLY ALL EPOXY gluings ONLY in HORIZONTAL position !!
3. Apply sleeves AFTER curing and keep isolation AWAY from EPOXY GLUING area !!



1	AA6927	Shrink Sleeve 11D (Power-DOM Side)	A.1
1	AA6875	Power Cable Type 11A (Black)	A.2
1	AA6915	Shrink Sleeve 11B (Power-DOM Side)	A.1
1	AA6874	Power Cable Type 11B (Orange)	A.2
1	AA6249	Shrink Sleeve 1A (DOM side)	B.0
2	AA6250	Fiber C1 (Bend Bright) 250-127mu (single)	B
1	AA6812	Shrink Sleeve 10 (2 Fibers-BE0C side)	A
1	AA6871	Stud 11	B
Quantity		Part Number	Definition
Bill of Material:		AA6876	Revision

ATTENTION ! REVISION AS INDICATED IS PRODUCT OR PART REVISION

General tolerances unless otherwise stated according to : ISO-2768-mK-E Geometrical tolerances unless otherwise stated according to : ISO-8015-E Roughness unless otherwise stated according to : ISO-1302		Units: mm	Date: 12/08/2013	Revision: A
Project: Astroparticle Physics KM3NeT		Size: A2	Engineer: A. Korpelaar	
Top folder: Penetrators		Checked: A. Korpelaar	Item number: AA6876	Status: Released
Name: Stud 11 Ass'y				
National Institute for Subatomic Physics Science Park 105, 1098XG Amsterdam		Nikhef number: 45361-MT-01490		