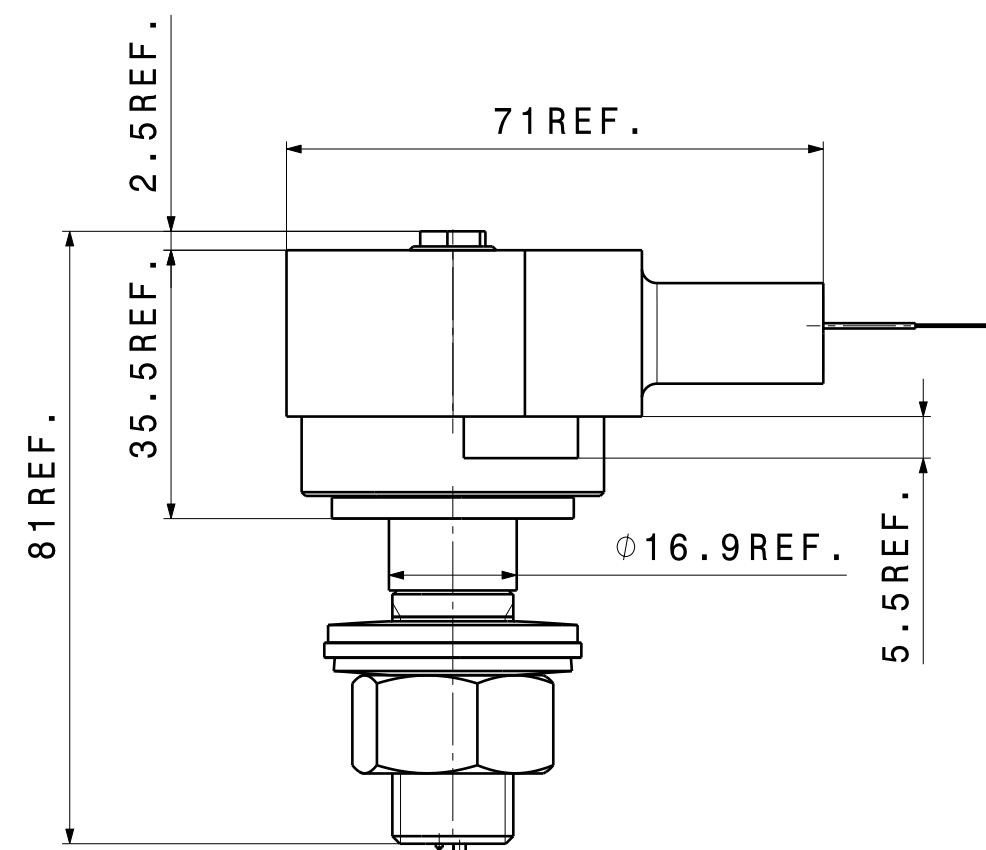
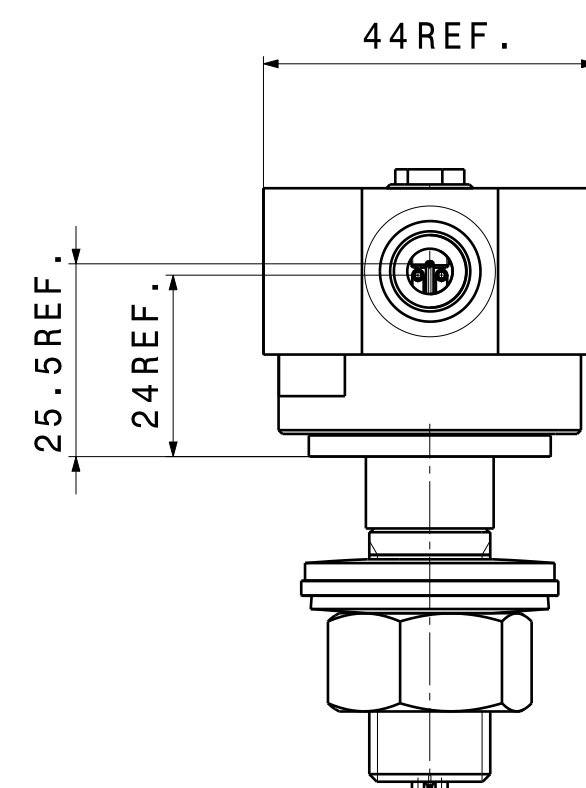


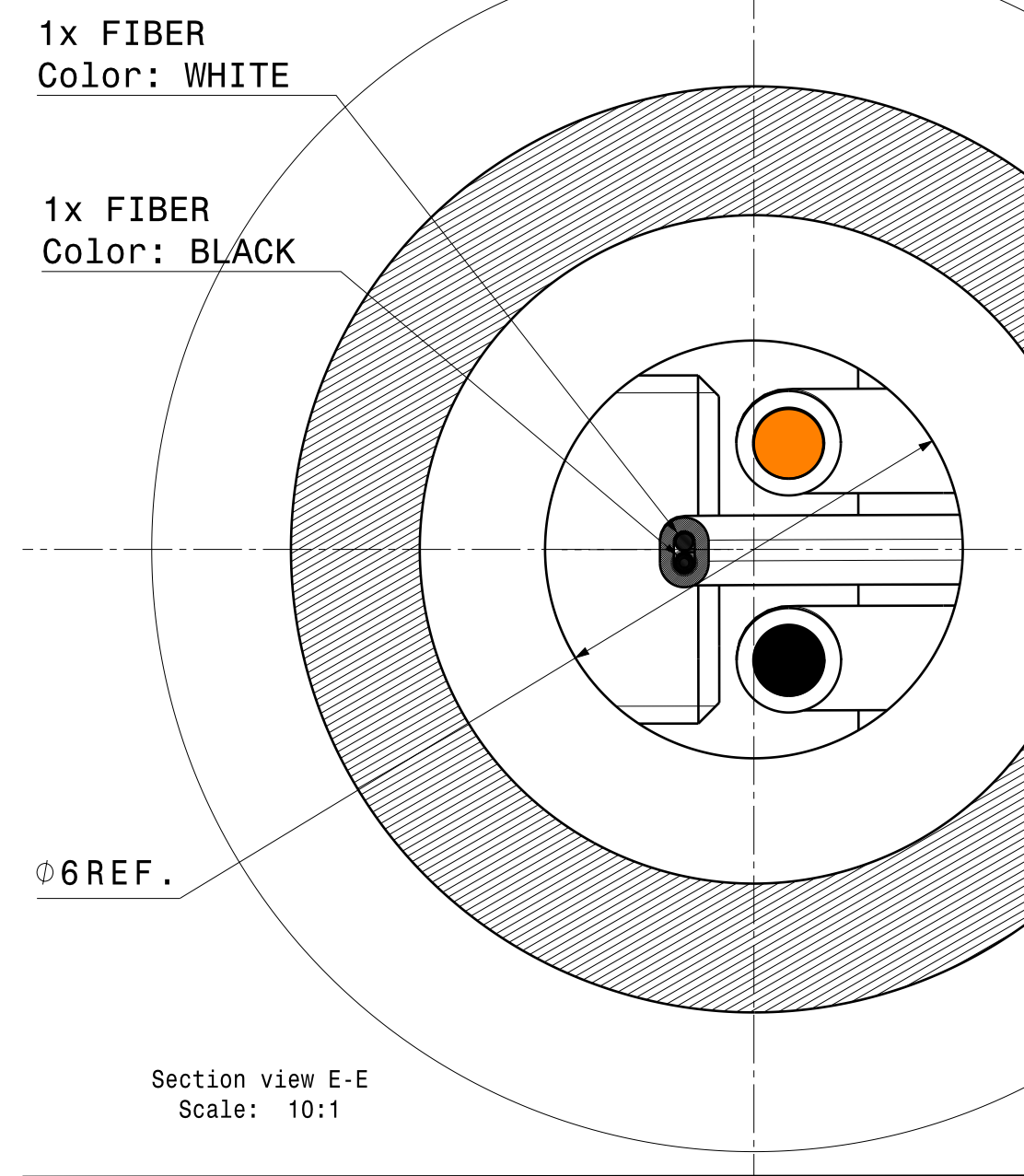
Top view
Scale: 1:1



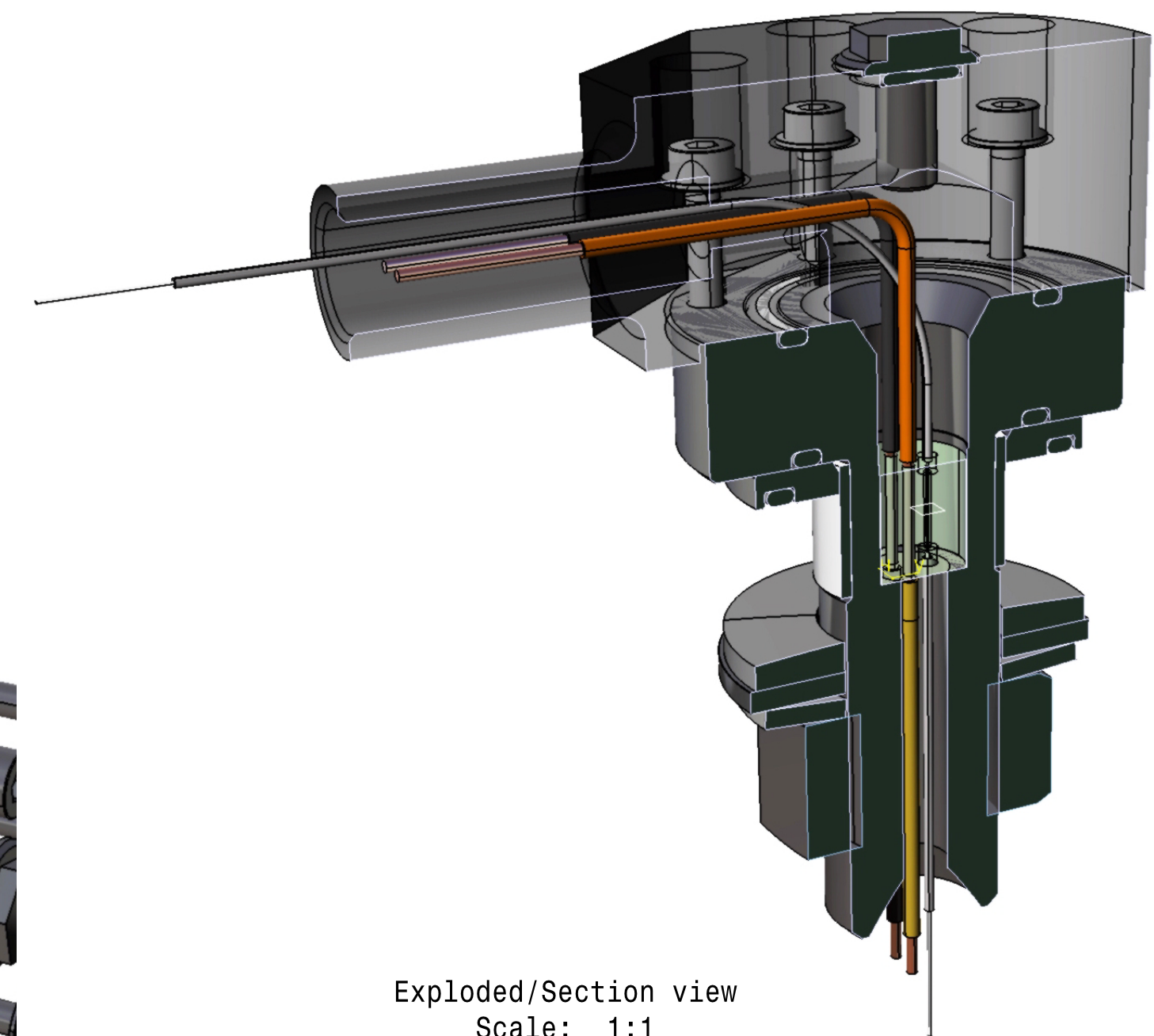
Front view
Scale: 1:1



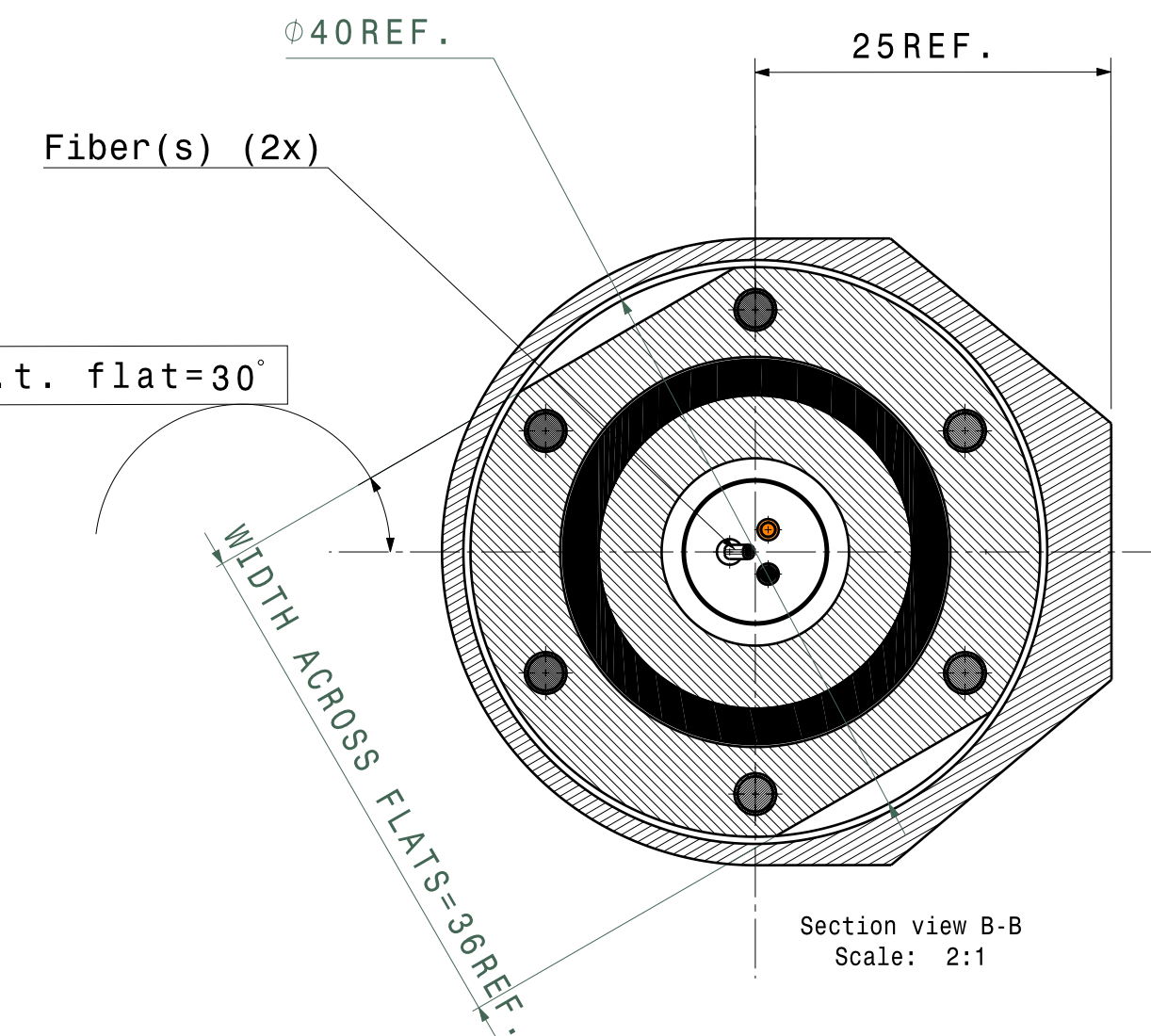
Right view D
Scale: 1:1



Section view E-E
Scale: 10:1

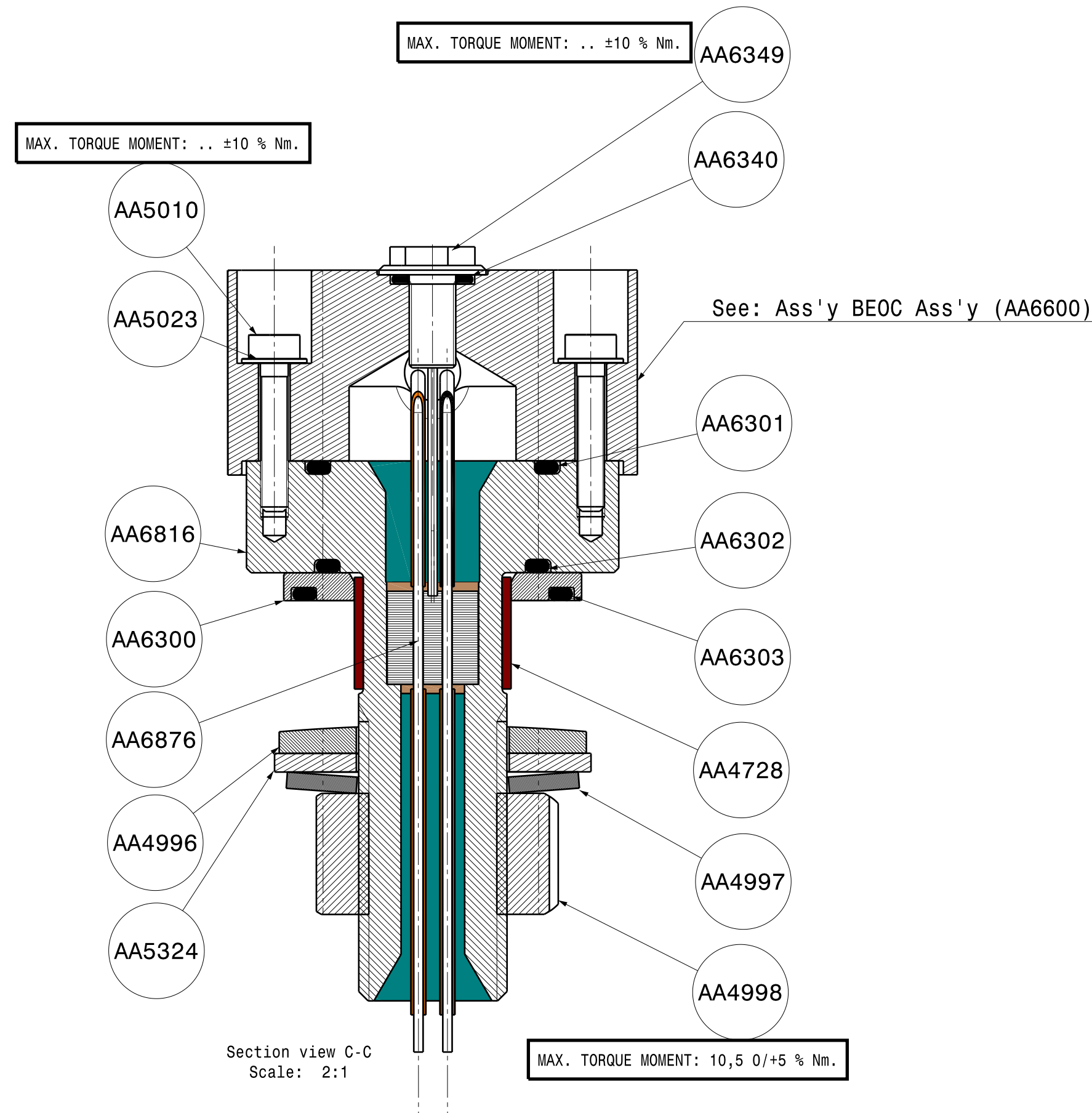


Exploded/Section view
Scale: 1:1



Section view B-B
Scale: 2:1

Stud 3A Ass'y (AA6246) orientation w.r.t. flat=30°



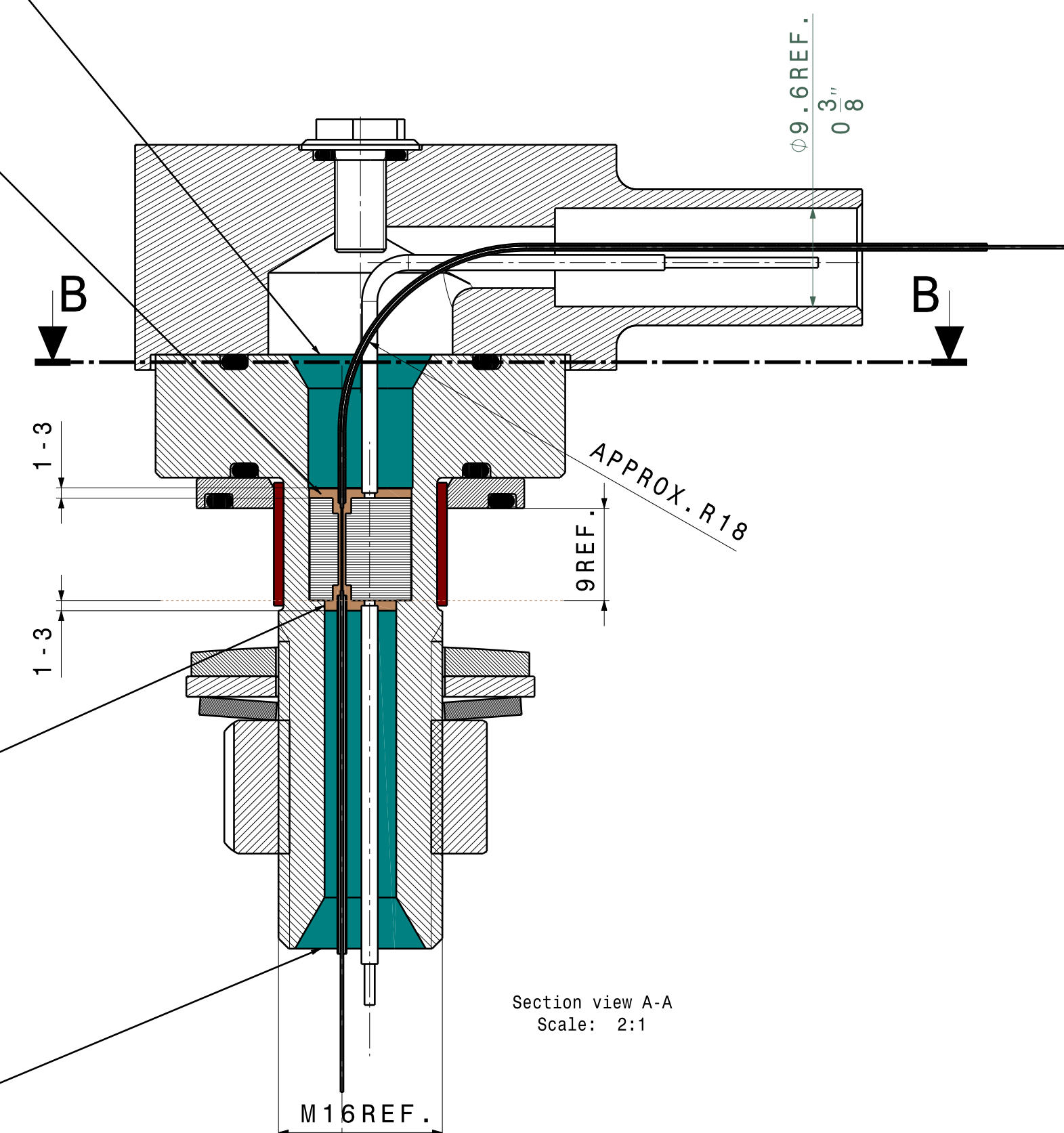
Section view C-C
Scale: 2:1

Silicone Rubber PS8530 A/B 1:1
See Doc.: AA6461 - Assembly procedure
PPM-DU DOM Penetrator.

Epoxy EPOTEK 353ND
See Doc.: AA6461 - Assembly procedure
PPM-DU DOM Penetrator.

Epoxy EPOTEK 353ND
See Doc.: AA6461 - Assembly procedure
PPM-DU DOM Penetrator.

Silicone Rubber PS8530 A/B 1:1
See Doc.: AA6461 - Assembly procedure
PPM-DU DOM Penetrator.



Section view A-A
Scale: 2:1

1	AA6551	Sealing screw angled I/O	A
6	AA5010	Hex. Socket Head Cap Screw M3x16	A
6	AA5023	M3 Washer (Titanium)	A
1	AA5324	Filling Ring BLGEST-16,5	A
1	AA4998	Hexagon Nut M16	B
1	AA4997	Conical Spring Washer M16-DIN 2093	A
1	AA4728	Centering Clip	A
1	AA6303	O-ring 7A (Axial)	C
1	AA6340	O-ring 5A (Axial)	D
1	AA6302	O-ring 6A (Axial)	C
1	AA6301	O-ring 1A (Axial)	C
1	AA6300	Adapter Ring 2A	B
1	AA4996	Profiled Washer 2	A
1	AA6876	Stud 11 Ass'y	A
1	AA6816	Penetrator DOM Type 7	A
Quantity Part Number Definition			Revision
Bill of Material: AA6930			

ATTENTION !
REVISION AS INDICATED
IS PRODUCT OR PART REVISION

NOTES: APPLY ASSEMBLED PRODUCT (AA6299) TO PRESSURE TEST AT:
Deployment depth +20%.
For Capa Passero site -Italy (PPM-DU) => 360+72 = 432 BAR
See doc. AA5769 - Penetrator DOM-BE0C Pressure Test Setup 1

General tolerances unless otherwise stated according to : ISO-2768-mc-E Geometrical tolerances unless otherwise stated according to : ISO-8015-E Roughness unless otherwise stated according to : ISO-1302		Units: mm	Date: 14/08/2013	Revision: B
Project: Astroparticle Physics KM3NeT		Sheet: A1	Engineer: A. Korporaal	
Top folder: Penetrators			Checked: A. Korporaal	
Name: Penetrator DOM Type 9 Ass'y			Item number: AA6930	Status: Released
National Institute for Subatomic Physics Science Park 105, 1098 XG Amsterdam			Nikhef number: 45361-MT-01492	