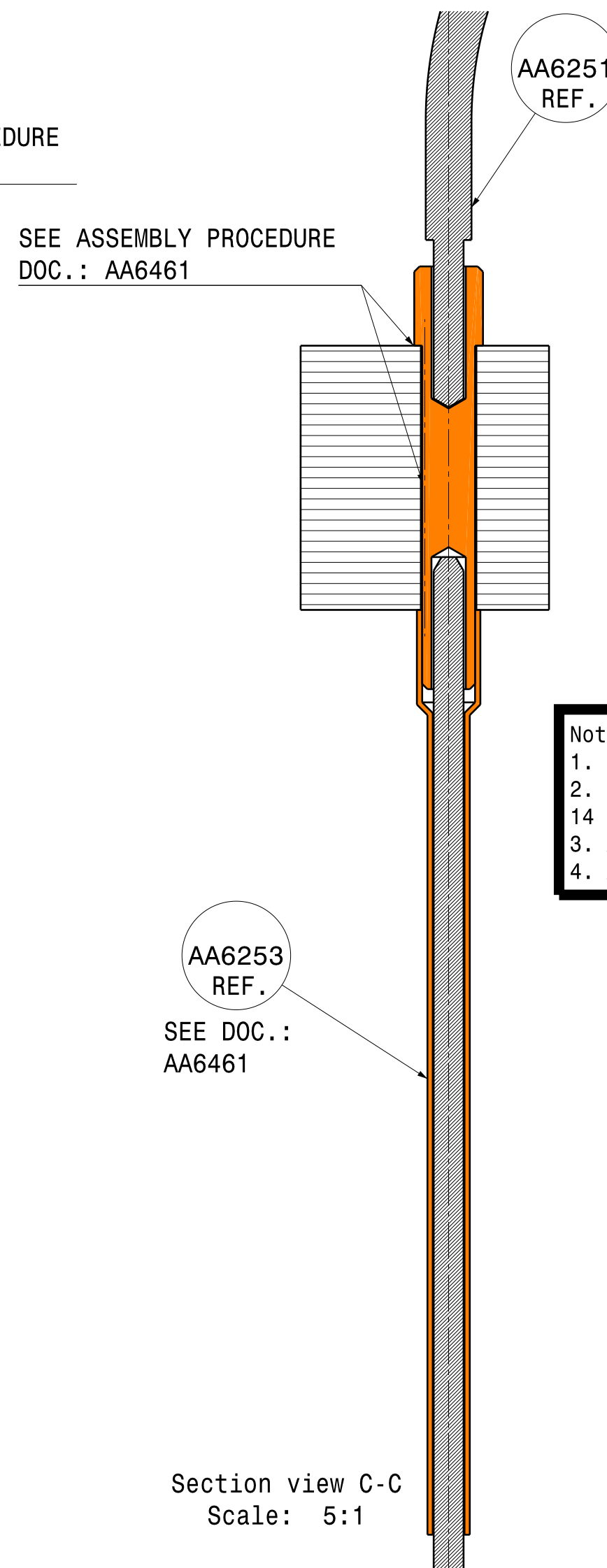
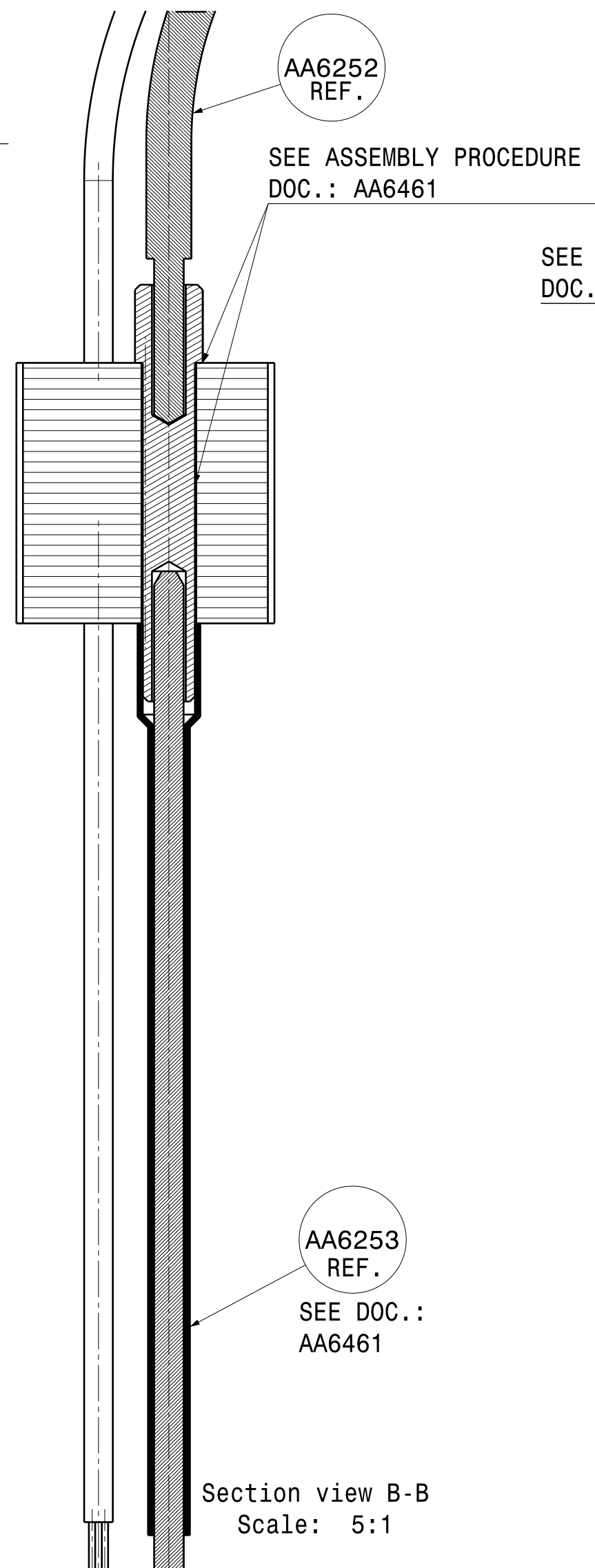
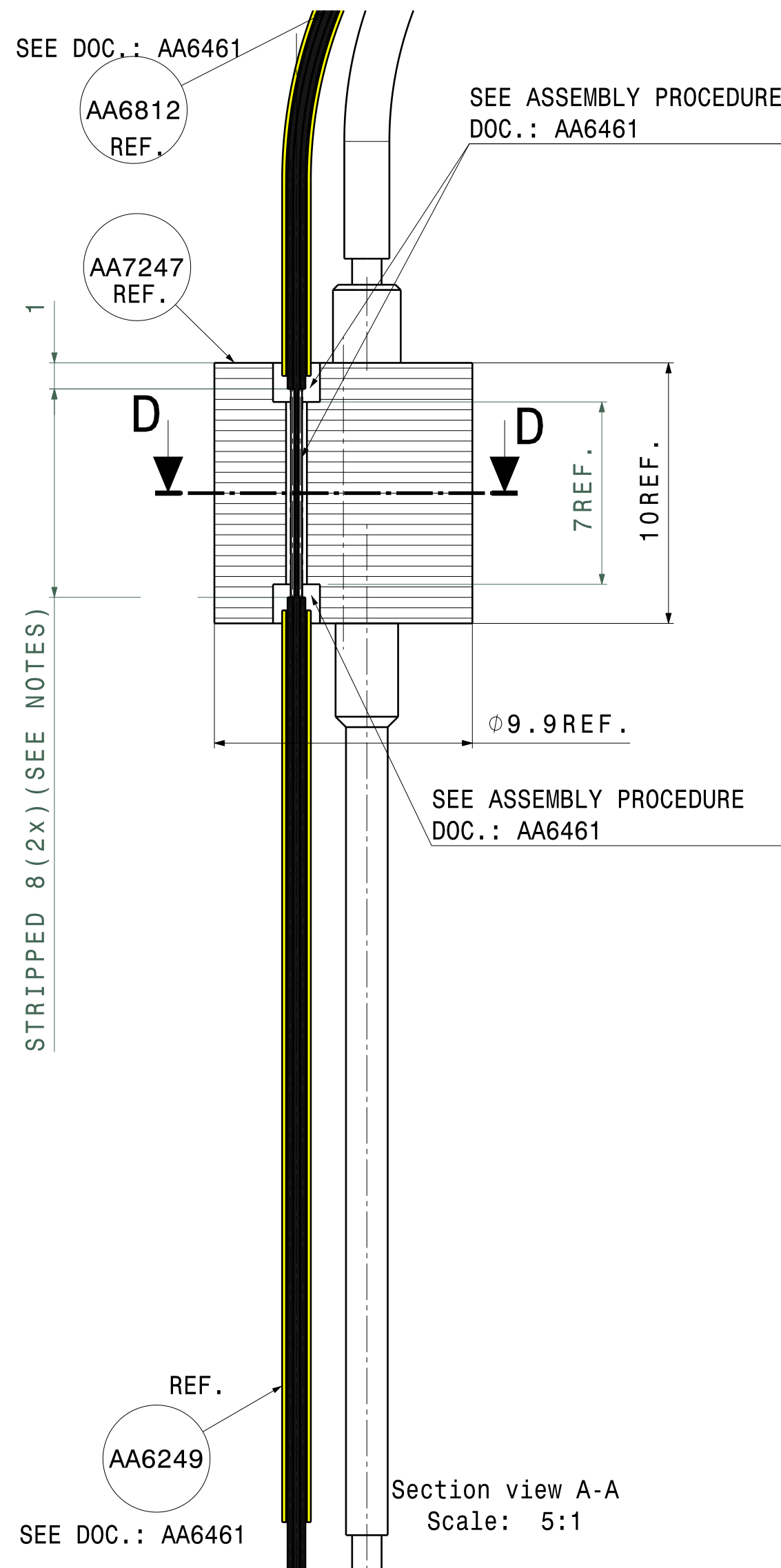


L4	1600	2x Power Cable
L3	1000	2x Power Cable
L2	1600	6x Fiber
L1	1500	6x Fiber
Length	mm	Note



6x Fiber
Color: GREEN
Color: ORANGE
Color: RED
Color: YELLOW
Color: BROWN
Color: BLUE



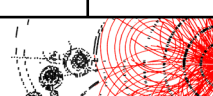
SEE ASSEMBLY PROCEDURE
DOC.: AA6461

Section view D-D
Scale: 20:1

- Notes:
1. Read doc.: Assembly Procedure PPM-DU DOM Penetrator (AA6461) carefully !
 2. IMPORTANT !! ALL SOLDERING STEPS MUST BE DONE BEFORE GLUING AND APART FROM STUD 14 (AA7247) !!
 3. ATTENTION !! APPLY ALL EPOXY gluings ONLY in HORIZONTAL position !!
 4. Apply sleeves AFTER curing and keep isolation AWAY from EPOXY GLUING area !!

2	AA6843	Power Cable Type 10A_DOM Side (Stripped Insulation)	A
2	AA6830	Cable Soldering Pin Type A	C
2	AA6815	Shrink Sleeve 10 (Power-DOM Side)	A
1	AA6814	Power Cable Type 10B (Orange)	A
1	AA6813	Power Cable Type 10A (Black)	A
1	AA6963	Fibres 6x (BB) for Penetrator Base Container PPM-DU	A
1	AA7248	Shrink Sleeve 12 (6 Fibers-DOM side)	B
1	AA6981	Shrink Sleeve 12 (6 Fibers-BEOC side)	D
1	AA7247	Stud 14	A
Quantity	Part Number	Definition	Revision
Bill of Material: AA7246			

ATTENTION ! REVISION AS INDICATED
IS PRODUCT OR PART REVISION

General tolerances unless otherwise stated according to : ISO-2768-mK-E Geometrical tolerances unless otherwise stated according to : ISO-8015-E Roughness unless otherwise stated according to : ISO-1302				
Project: Astroparticle Physics KM3NeT		Units: mm	Date: 25/11/2013	Revision: B
Top folder: Penetrators		Size: A2	Engineer: A. Korpelaar	
Name: Stud 14 Ass'y			Checked: A. Korpelaar	
		Item number: AA7246	Status: Released	
 National Institute for Subatomic Physics Science Park 105, 1098XG Amsterdam		 Nikhef number: 45361-MT-01521		
This drawing may not be used for commercial purposes without written authorisation.				