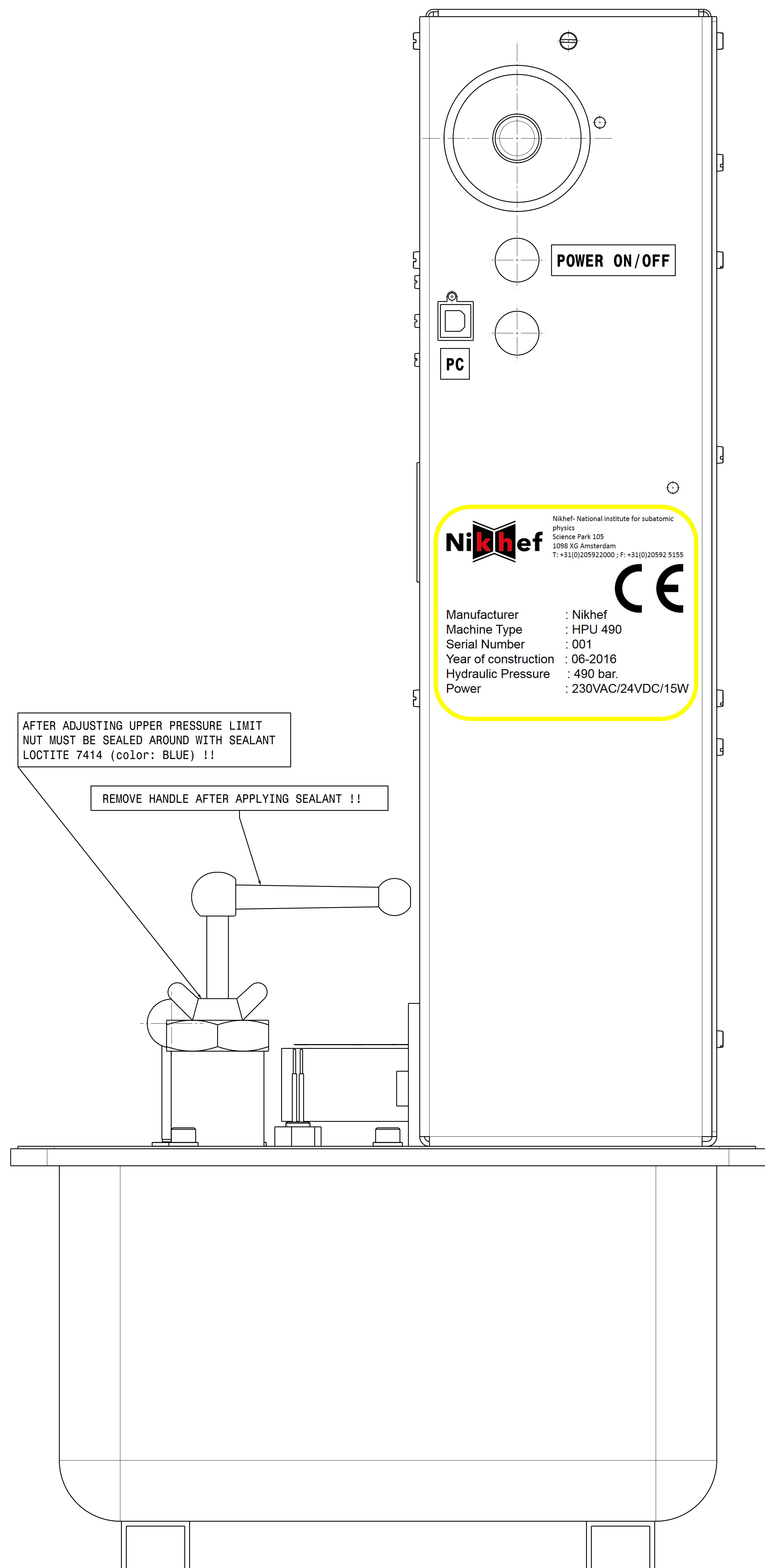
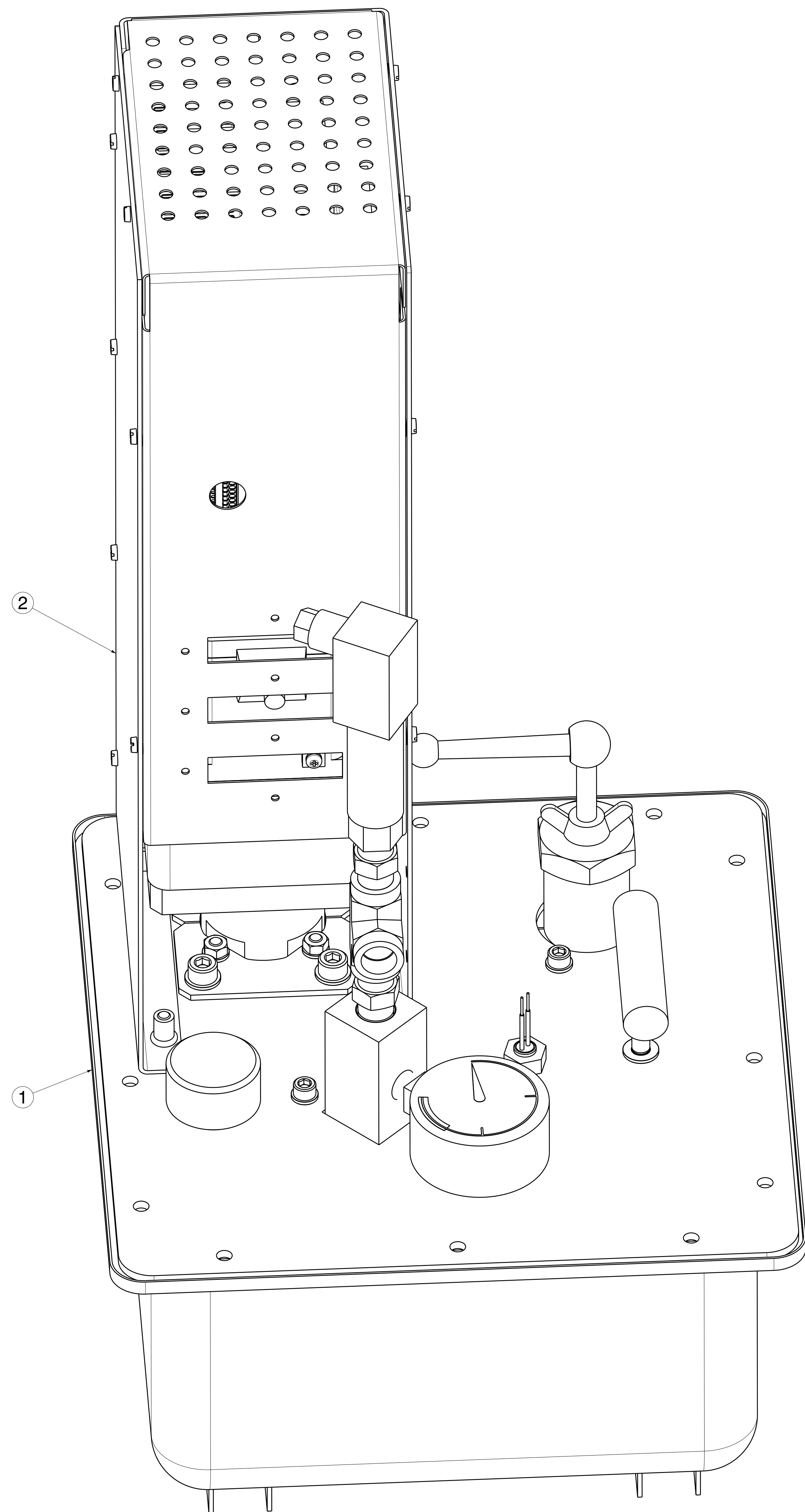


Left view
Scale: 1:1



Front view
Scale: 1:1



Notes:

1. For pressure test procedure see Nikhef doc.:
2. Any modification on the high pressure system is **STRICTLY FORBIDDEN** and subject to another **SAFETY CHECK** !!
3. Read instruction manual (Nikhef.doc:) **BEFORE** using the equipment !
4. This system must be pressure tested and certified **BEFORE** installing/applying on current HERA-VESSEL system (Nikhef H 1147b) !
- 5.

2	1	Controller Unit AC-BXII (Oriental Motor) Ass'y	AB0054	AB0054	6
1	1	Hydraulic Pump Unit (700BAR) Ass'y Type 2	AB0041	AB0041	6
Pos	Nr	Qty	Definition	Item No	Nikhef Number
Several tolerances unless otherwise stated according to : ISO 2768-MK-4 General tolerances unless otherwise stated according to : ISO 2768-M Degrees unless otherwise stated according to : ISO 1030-1					
Project: Astroparticle Physics KM3eT					
Top folder: Pressure Tests NIKHEF					
Name: Hydraulic Pump Unit including Controller Unit					
Date: 03/06/2016 Drawn: AD Checked: A. Korpelaar Item number: AB0055 Status: In Work					
Nikhef National Institute for subatomic physics Science Park 105, 1098 XG Amsterdam Nikhef number: 45361-MT-02344					
This drawing may not be used for commercial purposes without written authorization.					