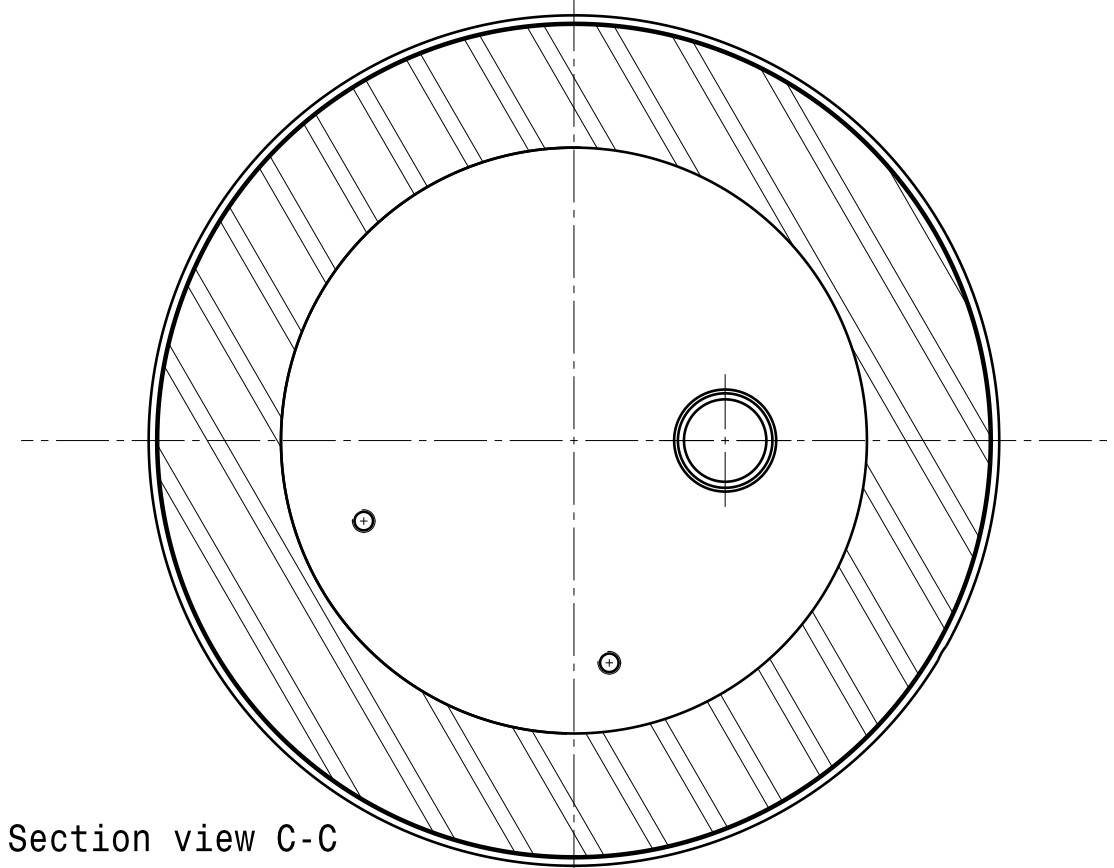
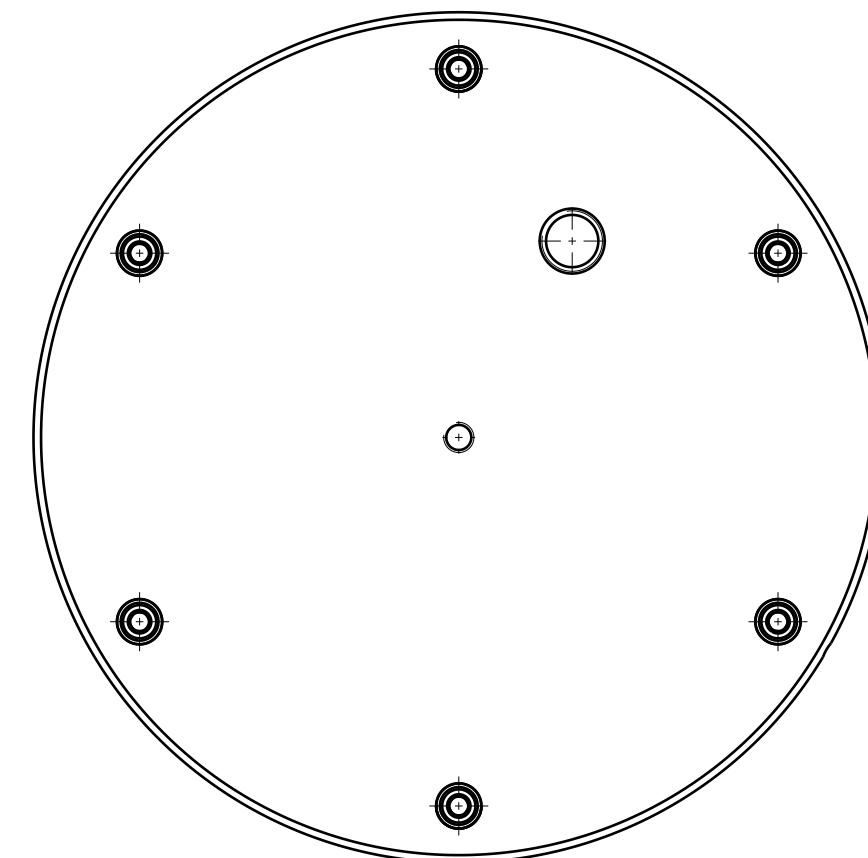


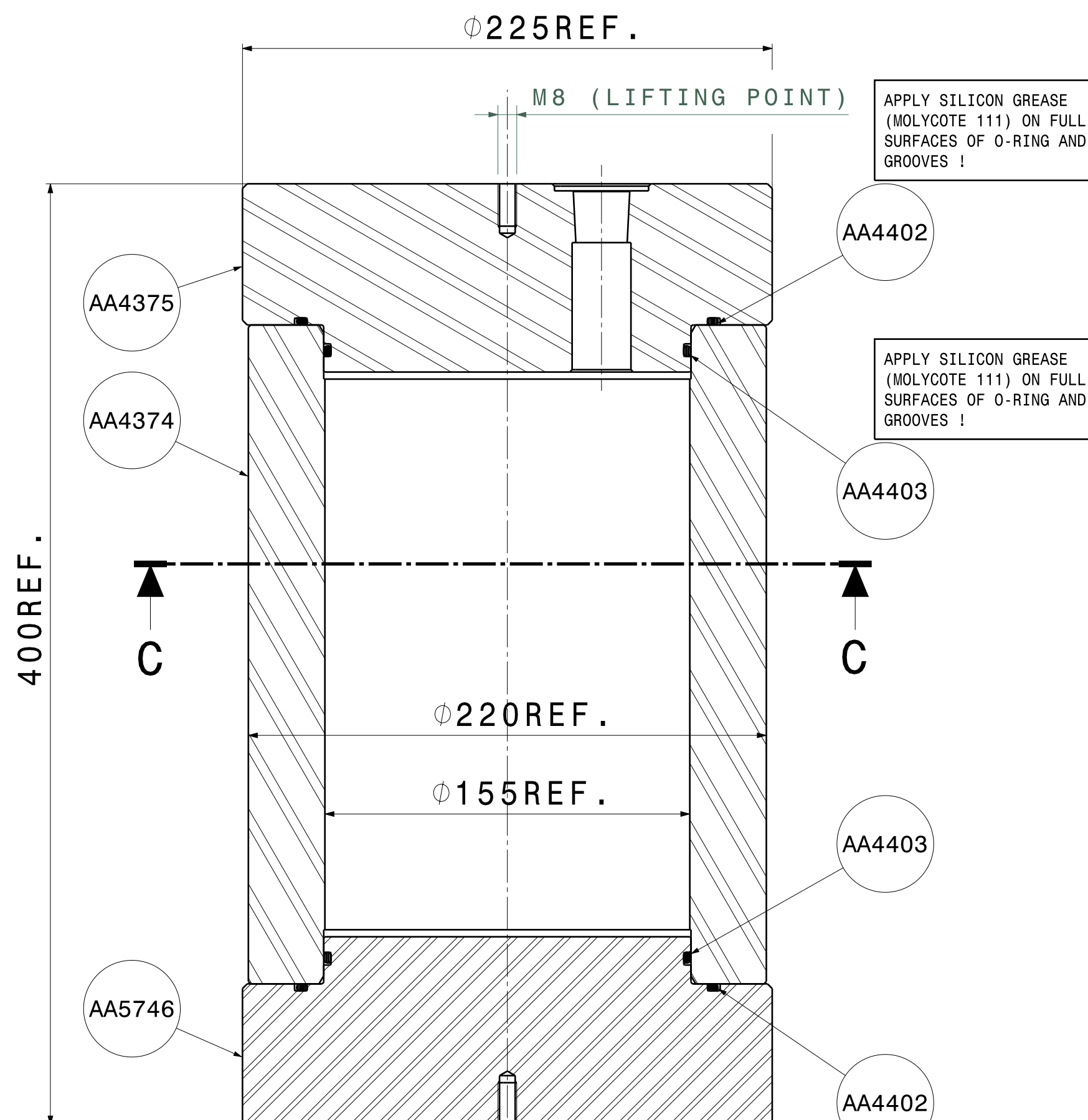
Front view
Scale: 1:2



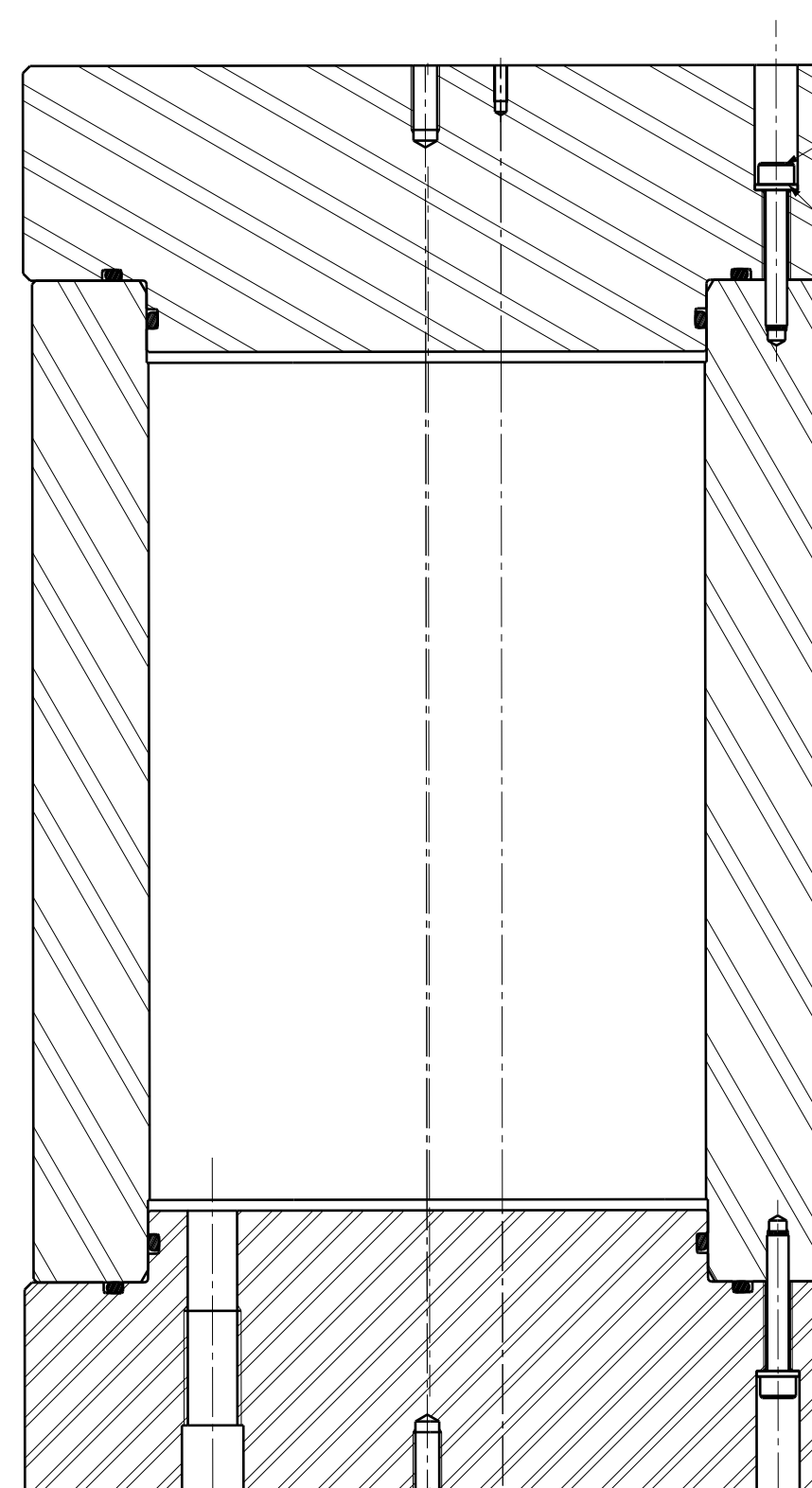
Section view C-C
Scale: 1:2



Auxiliary view D
Scale: 1:2



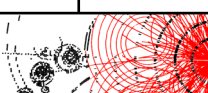


Section view A-A
Scale: 1:2



Section view B-B
Scale: 1:2

2	AA4403	O-ring (Radial)	A
2	AA4402	O-ring (Axial)	A
12	AA0755	Imbus M6x40	
12	AA0133	M6-Washer	
1	AA5746	End Cover 7 (VEOC LOM TEST B01-A)	C
1	AA4375	End Cover 6 (penetrator side)	C
1	AA4374	Cylinder 4	A
Quantity		Part Number	Definition
Bill of Material: AA5745		Revision	

General tolerances unless otherwise stated according to :ISO-2768-mK-E Geometrical tolerances unless otherwise stated according to :ISO-8015-E Roughness unless otherwise stated according to :ISO-1302				
Project: Astroparticle Physics KM3NeT		Units: mm	Date: 16/04/2013	Revision: C
Top folder:VEOC for LOM-test B		Size: A2	Engineer: A. Korporaal	
Name: Pressure Vessel VEOC LOM TEST B01-A			Checked: A. Korporaal	
			Item number: AA5745	Status: Released
 National Institute for Subatomic Physics Science Park 105, 1098XG Amsterdam				Nikhef number: 45361-MT-01261
This drawing may not be used for commercial purposes without written authorisation.				