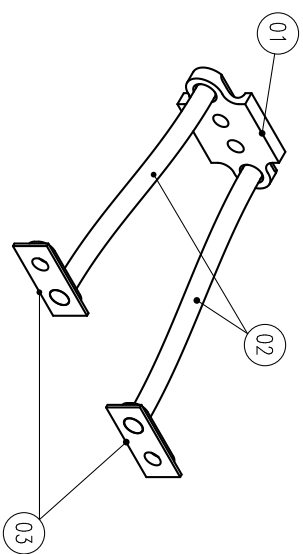
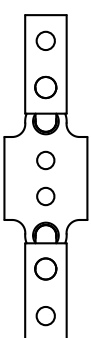
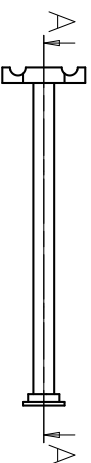
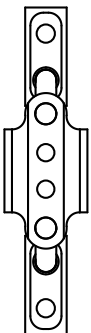
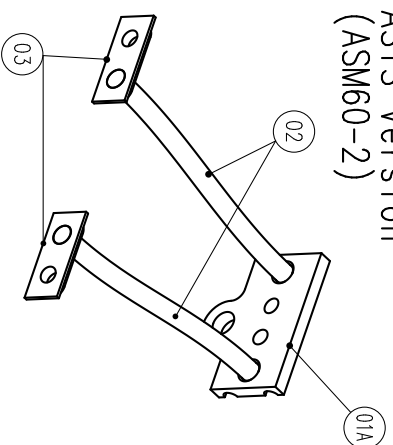


Note 1: Weld copper braids into copper blocks according to specification ASR-S-002

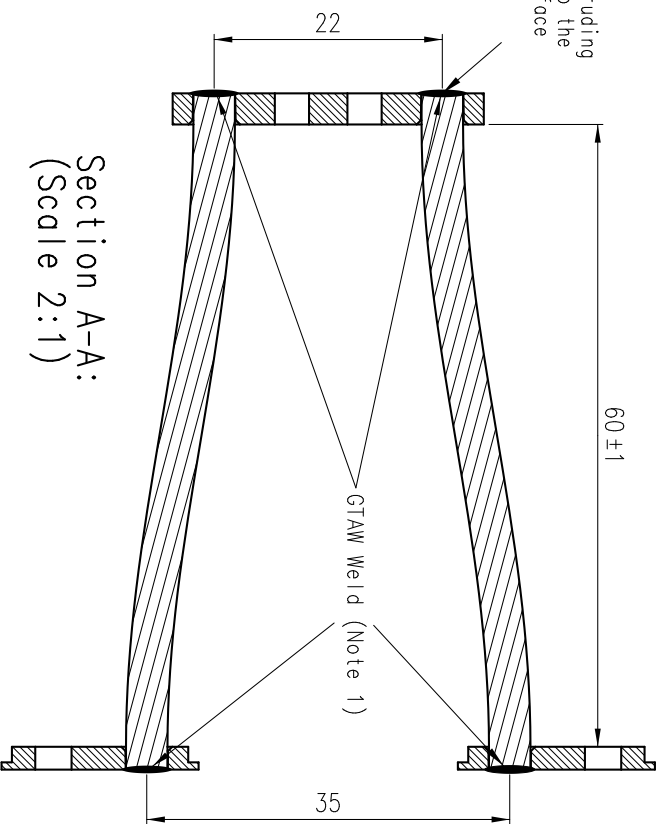
Standard Version (ASM60-1)



ASTS Version (ASM60-2)



Machine protruding welds flat to the original surface (All welds)



Section A-A:
(Scale 2:1)

PART NO.	NUM-BER	TITLE	MATERIAL	SIZE/NOTE	I.D. NO./NORM
03	2	P15 Th. Bar - Evaporator If Insert			ASM2003
02	2	Copper braid	copper	φ4x70	NIKHEF Store
01A		Pt Evaporator block (ASTS version)			ASM3106
01	1	P15 Evaporator block			ASM1901

Project: TTCS - Tracker Thermal Control System

Title: P15 Evaporator Braid Assy

Scale: 1:1	Drawn: B. Verlaot	Dim. in mm	General tolerances unless otherwise stated according to ISO-2768-FH-E	Geometrical tolerances unless otherwise stated according to ISO-8015-E	Roughness unless otherwise stated according to ISO 1302
Date: 1-6-2004					



NATIONAL INSTITUTE FOR NUCLEAR PHYSICS,
AND HIGH ENERGY PHYSICS
P.O.41882, 1009 DB Amsterdam, The Netherlands
Visitors: Kruislaan 409, 1098 SJ, Amsterdam
tel: +31-(0)20-5922095
fax: +31-(0)20-5925155

Size	Identification No.:
A3	ASM60
Sheet No: 1	Number of sheets: 1

