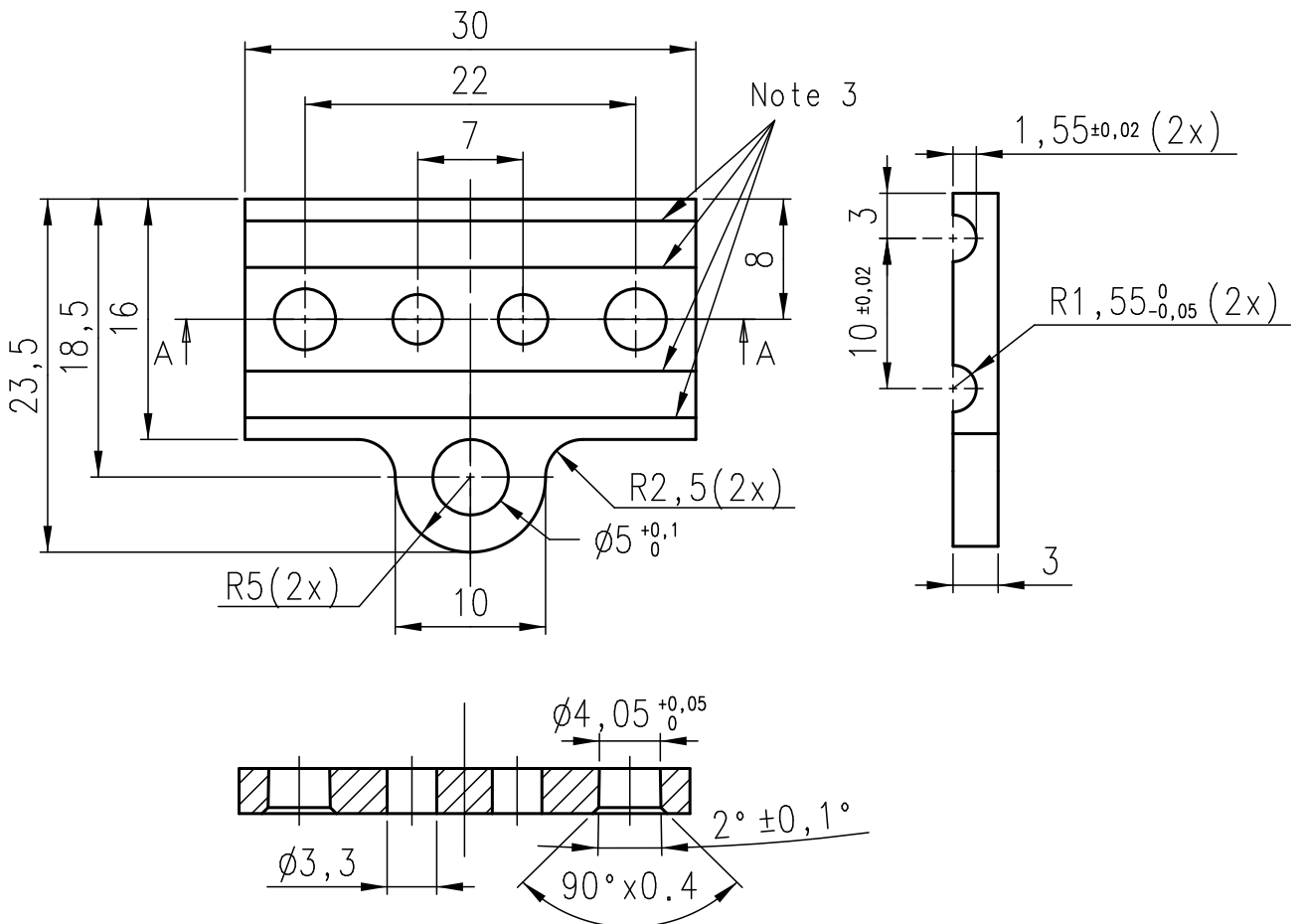
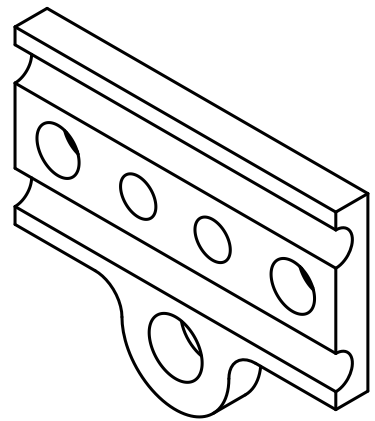


Note 1: Welding of the copper braids in the conical hole $\phi 4.05$ may require an unfinished part with larger dimensions. If so, the final part will get its dimensions as drawn after welding.

Note 2: Break sharp edges, except the indicated edges (See note 3)

Note 3: Leave this edges sharp



			Copper		
PART NO.	NUMBER	TITLE	MATERIAL	SIZE/NOTE	I.D. NO./NORM
Project: TTCS - Tracker Thermal Control System			 Dim. in mm	Revision	Date
Title: P1 Evaporator block (ASTS version)				A	Name
				B	
Scale: 2:1			Drawn: B.Verlaat	General tolerances unless otherwise stated according to ISO-2768-fH-E	Geometrical tolerances unless otherwise stated according to ISO-8015-E
Date: 1-6-2004					Roughness unless otherwise stated according to ISO 1302
 NATIONAL INSTITUTE FOR NUCLEAR PHYSICS, AND HIGH ENERGY PHYSICS P.O. 41882, 1009 DB Amsterdam, The Netherlands Visitors: Kruislaan 409, 1098 SJ, Amsterdam tel: +31-(0)20-5922095 fax: +31-(0)20-5925155			Size	Identification No.:	
			A4	ASM3106	
			Sheet No: 1 Number of sheets: 1		

