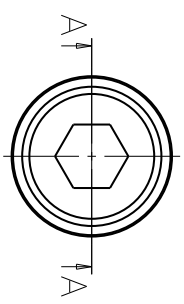
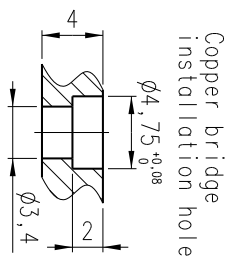
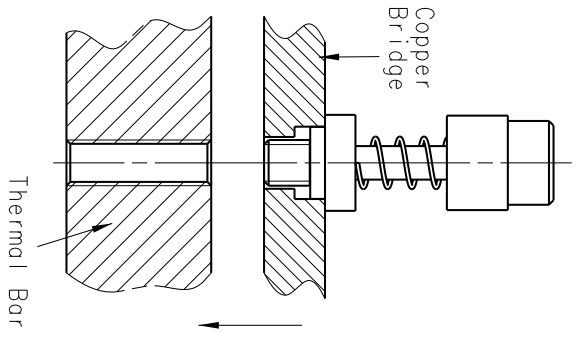
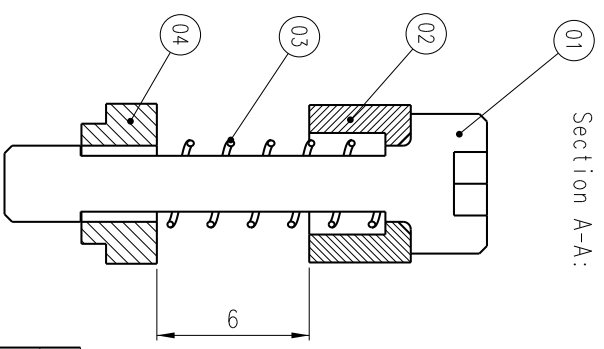


Destroy internal thread of the self clinching insert after pre-assembly

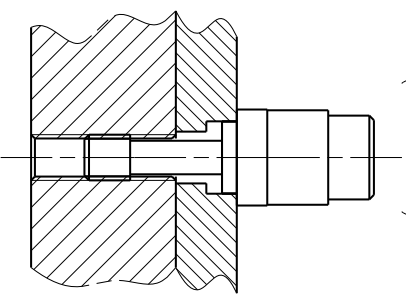
Pre Assembly Status:
(Scale 3:1)



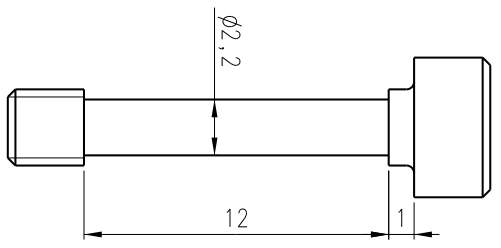
Section A-A:



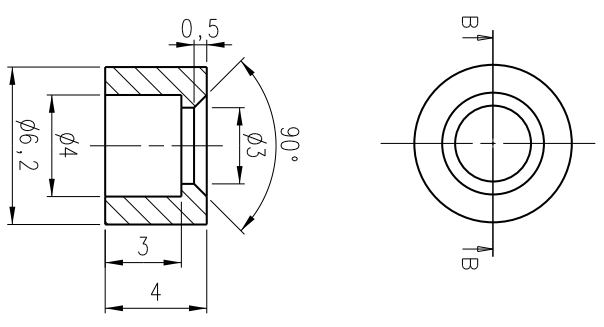
Fastened Status:
(Scale 3:1)



01 M3 Bolt Machining:



02 Spacer details:



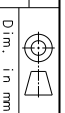
04	1	Self Clinching Nut	AA2024-T4	M3	PEM CLA-M3-1
03	1	Compression Spring	GRESS301	3.2x0.25x10.7	Tevema D20560
02	1	Spacer	AA6061		
01	1	Machined Bolt	GRESS16/ A4.80	M3x16	DIN912M3x16/A4.80
316		Captive Screw Assembly			
PART NO. BER		TITLE	MATERIAL	SIZE/NOTE	I. D. NO. /NORM

Project: AMS-Silicon Tracker

Title: M3 Captive Screw Assembly

Scale: 5:1
Date: 4 sept 2002

Drawn: B. Verloot



General tolerances (otherwise stated) according to ISO-2768-TH-E
Surface roughness (otherwise stated) according to ISO 1302



NATIONAL INSTITUTE FOR NUCLEAR PHYSICS,
AND HIGH ENERGY PHYSICS
P.O. 41892, 1099 DB Amsterdam, The Netherlands
Visitors: Kruislaan 409, 1098 SJ, Amsterdam
Tel.: +31-(0)20-5922000
fax: +31-(0)20-5925155

Size: A3
Identification No.: ASM080
Sheet No.: 1 Number of sheets: 1