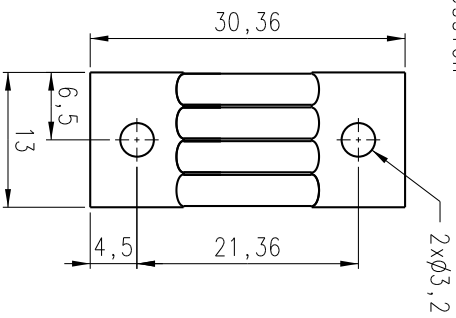
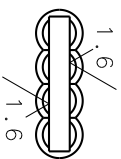
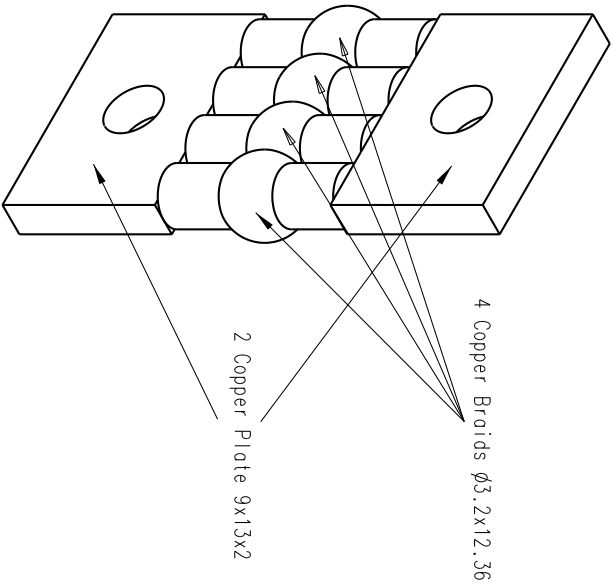
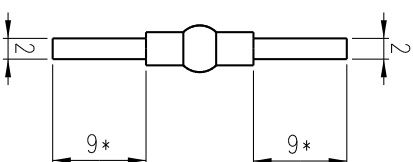
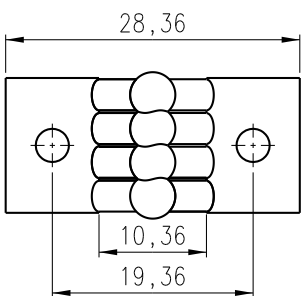


Dimensions before
compression



Dimensions after
compression



* Remove weld material in this area to create a smooth surface with the indicated roughness. (This removal counts for both sides)

PART NO.	96	TITLE	E-CU/ETP
NUM-BER		MATERIAL	
Project:	AMS-Silicon Tracker		
Title:	Front Thermal Flex Connector		
Scale:	2:1	Drawn:	B.Verlaet
Date:	7-12-2000	Dim.:	in mm
		NATIONAL INSTITUTE FOR NUCLEAR PHYSICS, AND HIGH ENERGY PHYSICS P.O. 41882, 1009 DB Amsterdam, The Netherlands Visitors: Kruislaan 409, 1098 SJ Amsterdam tel: +31-(0)20-5922000 fax: +31-(0)20-5925155	
Size	A1	Identification No.:	ASD1002
Sheet No.:	1	Number of sheets:	1
General tolerances (Geometrical tolerances unless otherwise stated according to ISO-2768-mK-E)		Roughness (Surface texture) (unless otherwise stated according to DIN 3142)	
E		Date	9-07-02
n	A	Name	Verlaet
>	B		
≥	C		