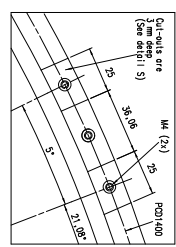
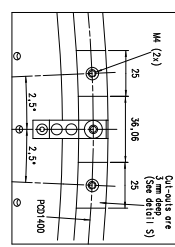


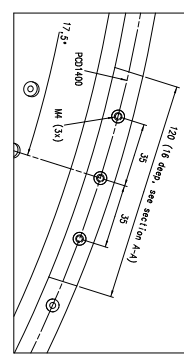
Detail K
(Scale 1:1)



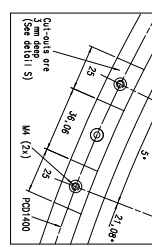
Detail L
(Scale 1:1)



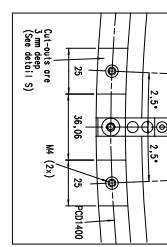
Detail M
(Scale 1:1)



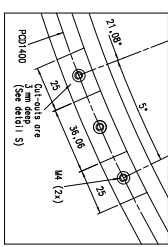
Detail N
(Scale 1:1)



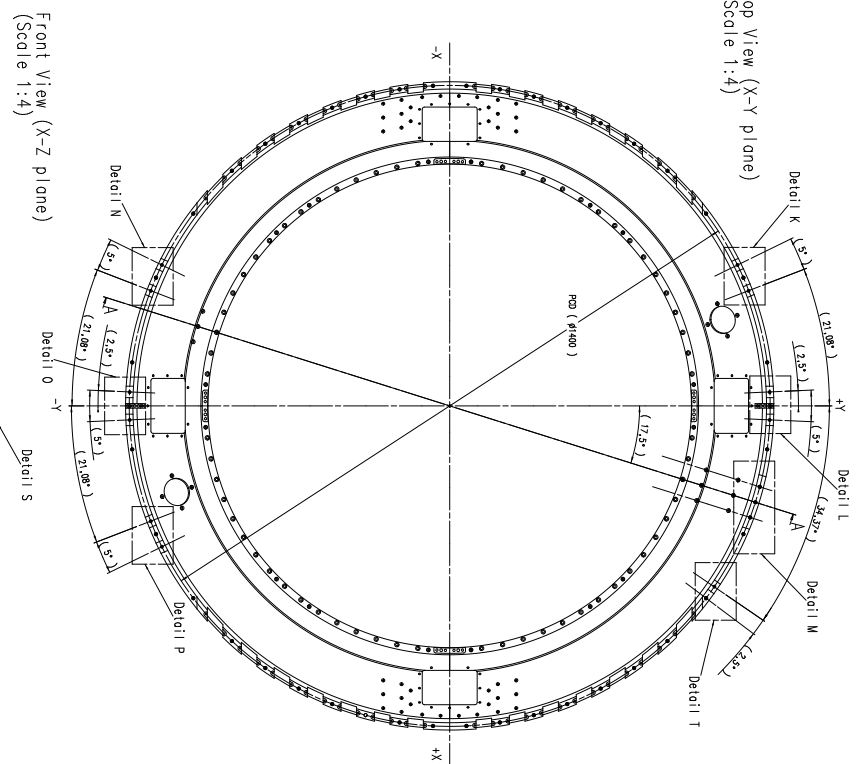
Detail O
(Scale 1:1)



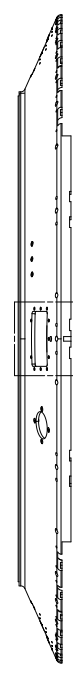
Detail P
(Scale 1:1)



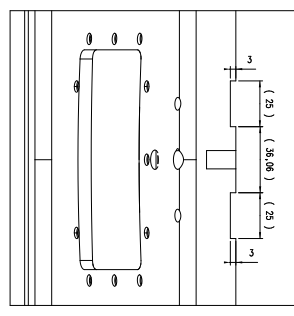
TOP VIEW (X-Y plane)
(Scale 1:4)



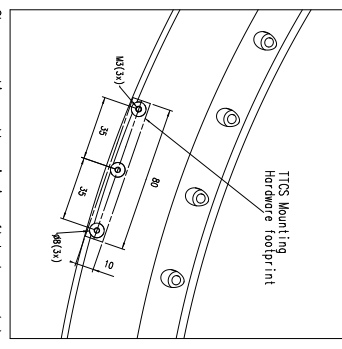
FRONT VIEW (X-Z plane)
(Scale 1:4)



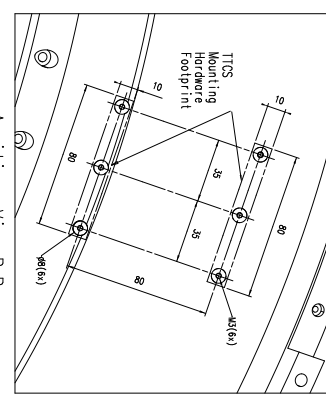
Detail S
(Scale 1:1)



Auxiliary View C-C
(Scale 1:1)

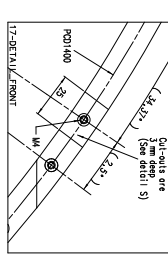


Shown mounting pattern is in a flat plane and does not follow the conical shape of the flange!



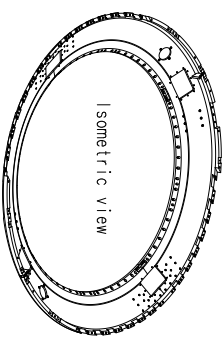
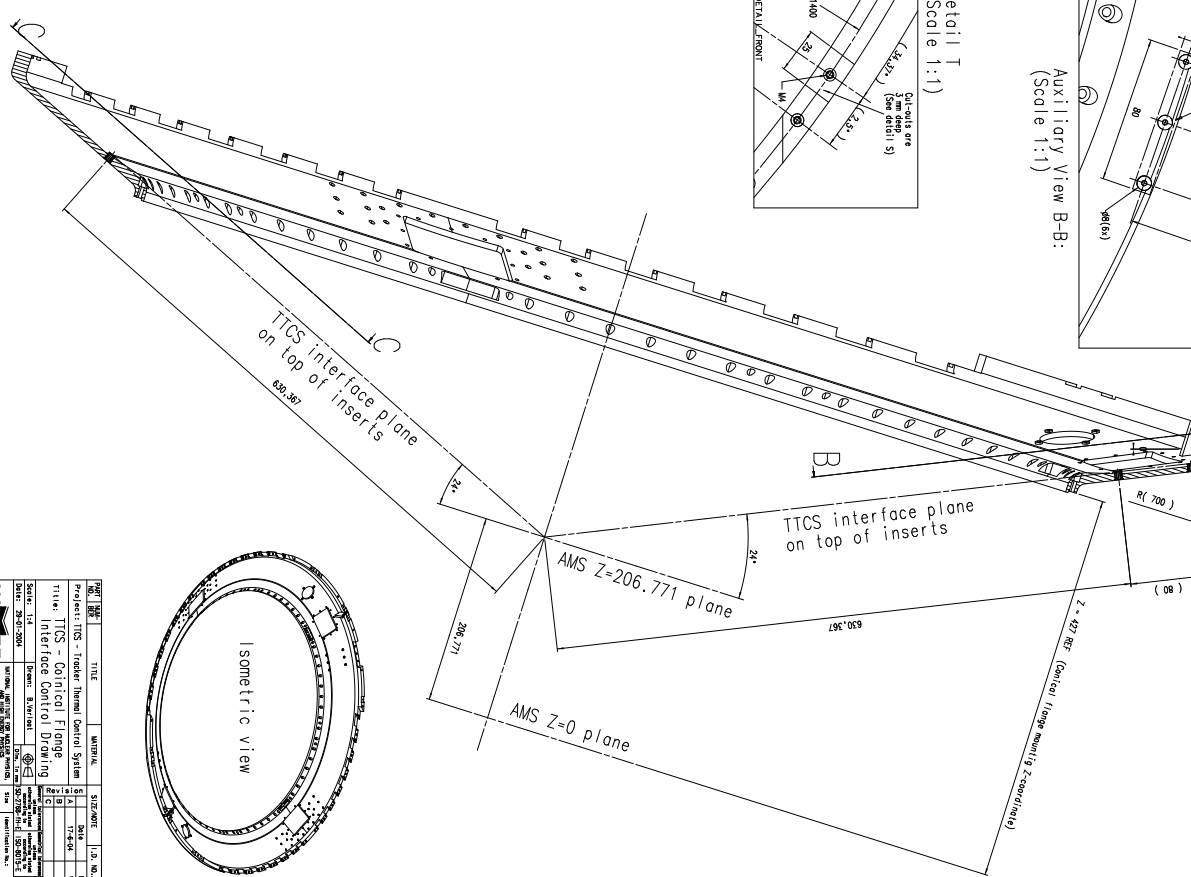
Auxiliary View B-B
(Scale 1:1)

Detail T
(Scale 1:1)



Shown TICS interface dimensions are for the upper conical flange. The lower conical flange is an exact mirror copy concerning TICS interfaces

Section A-A:
(Scale 1:2)



NO.	REV.	TITLE	DATE	BY	CHKD.	APP.
1		TICS - Conical Flange Interface Control Drawing	17-03-2011	AO	ASB011	

NO.	REV.	TITLE	DATE	BY	CHKD.	APP.
1		TICS - Conical Flange Interface Control Drawing	17-03-2011	AO	ASB011	

NO.	REV.	TITLE	DATE	BY	CHKD.	APP.
1		TICS - Conical Flange Interface Control Drawing	17-03-2011	AO	ASB011	