



Four quadrant diode front end module
for the Virgo Linear Alignment

Here you find pictures and instructions
for mounting and assembly/ disassembly

references in *italic* can be found via
<http://www.nikhef.nl/pub/departments/et/virgo/>

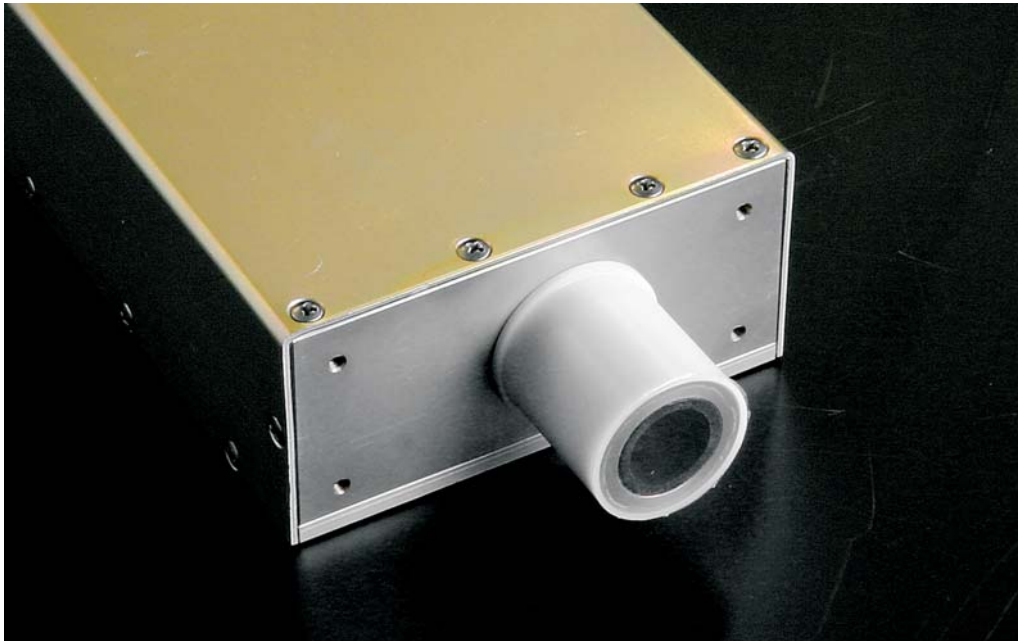
H.L. Groenstege
J.D. Schipper
A.H. Kruijer

email: h.groenstege@nikhef.nl
jds@nikhef.nl

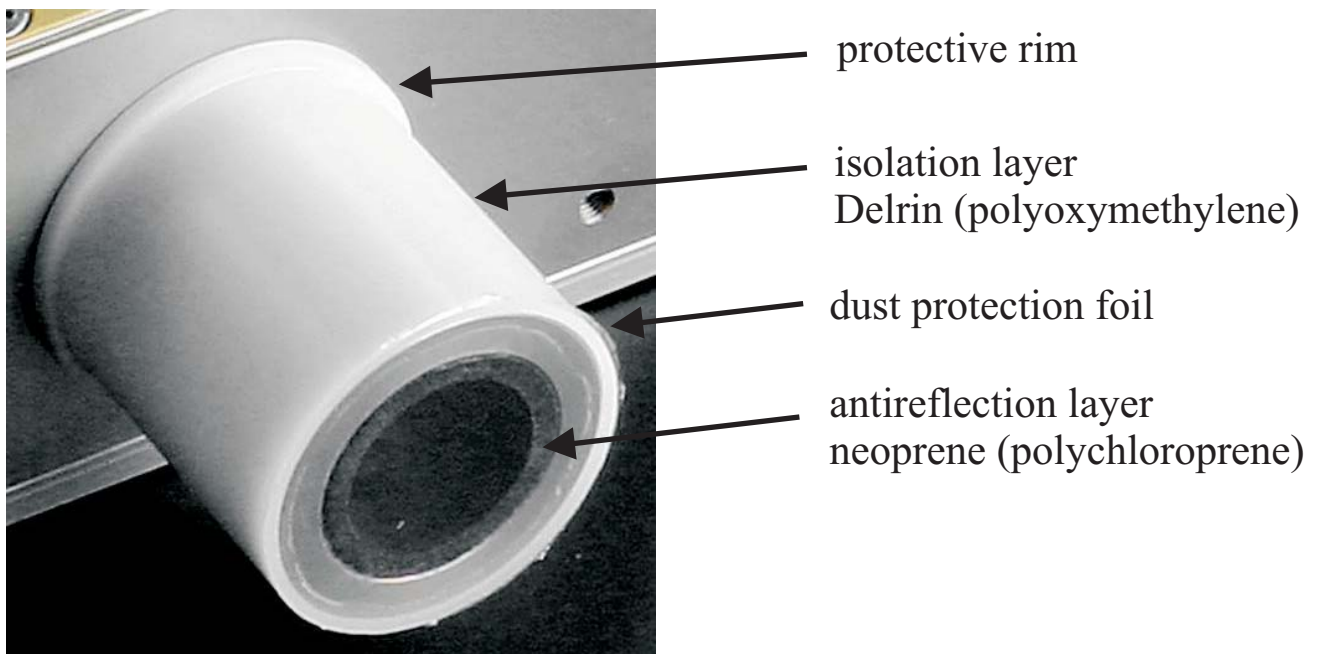
Mounting the FE module

The module is fixed by the 30 mm long, 30 mm diameter, mounting tube. The outer layer of the tube is made from [?] the prevent earth loops. There is a little rim that prevents the module from touching the holder. Since the module can rotate around the tube, provisions should be made (simple capton foil) to prevent the box touching the translation station. There is 1mm tolerance at this point.

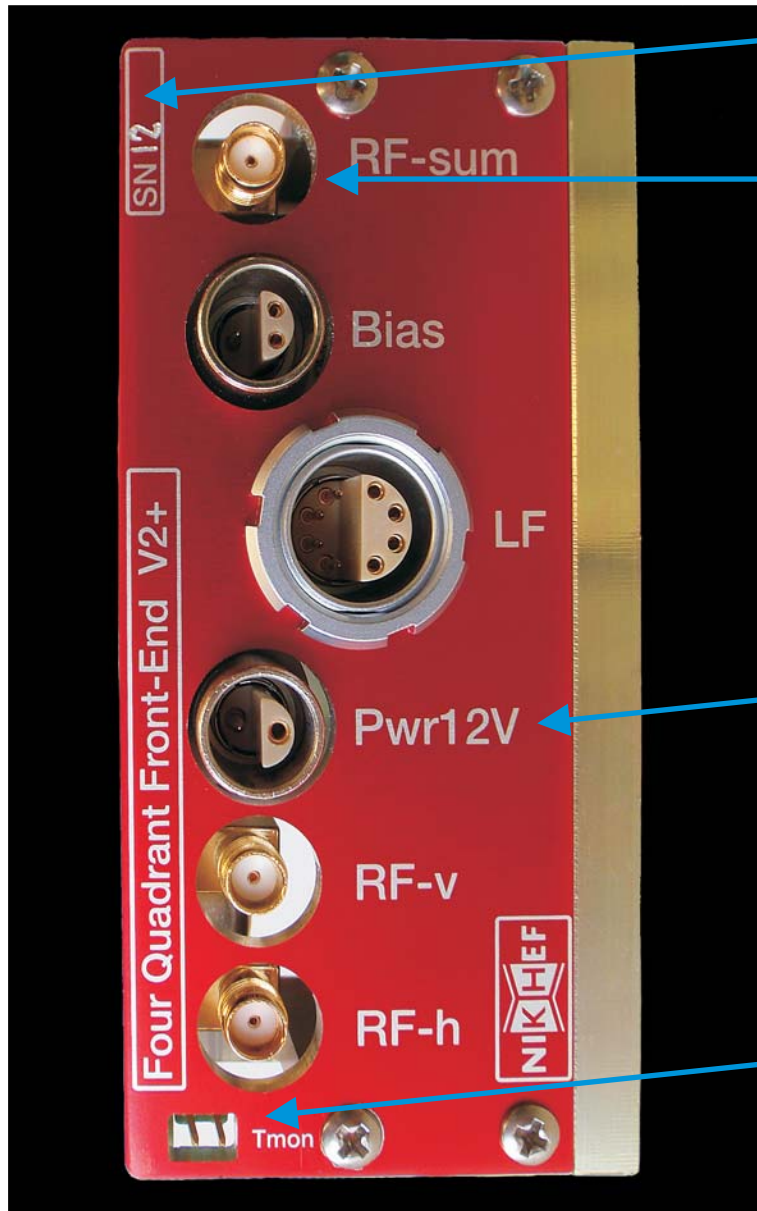
The dust protection foil should be removed before operation. It leaves very little residue.



The mounting tube is located 5.5 mm below the center of the box



The connectors



see *module types* for
module properties

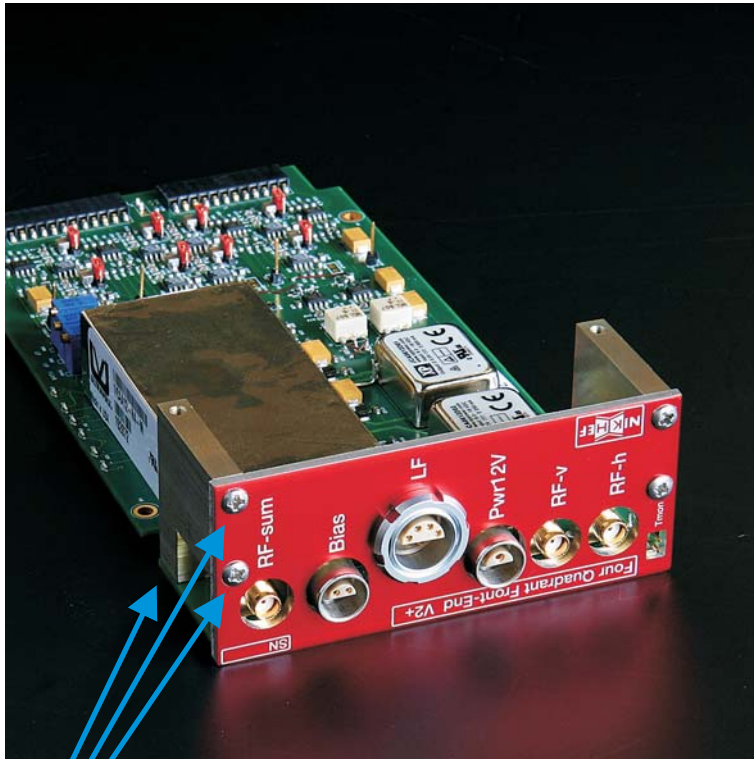
for debugging
purposes only

250...600 mA

sensor temperature monitor,
1 mV/K, + on right side

disassembly of the FE module

It may be necessary to open the FE module to change the whitening properties for example. First remove the cover. Keep in mind different kinds of screws are used at different locations. Remove the two screws that hold the large board on the detector side. Remove the screws that hold the large stand offs from the thick plate. The back panel should be kept attached to the main board. Then the board can slide back (away from the detector). After about 1 cm it can be lifted off. Then it should look like picture below. So, never try to remove the rear panel.



Do not remove